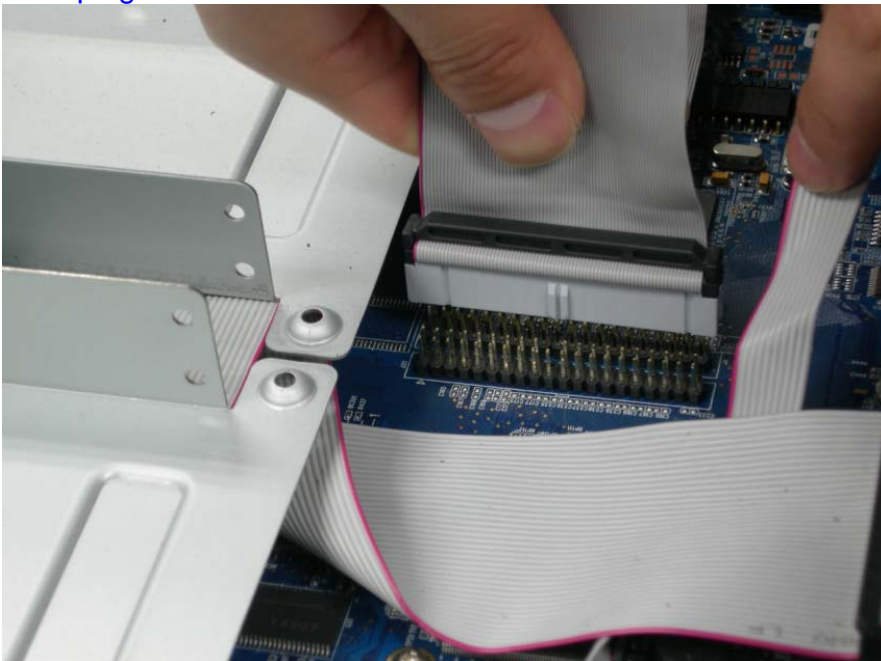


Hardware Reset Approach for DG1648/0824

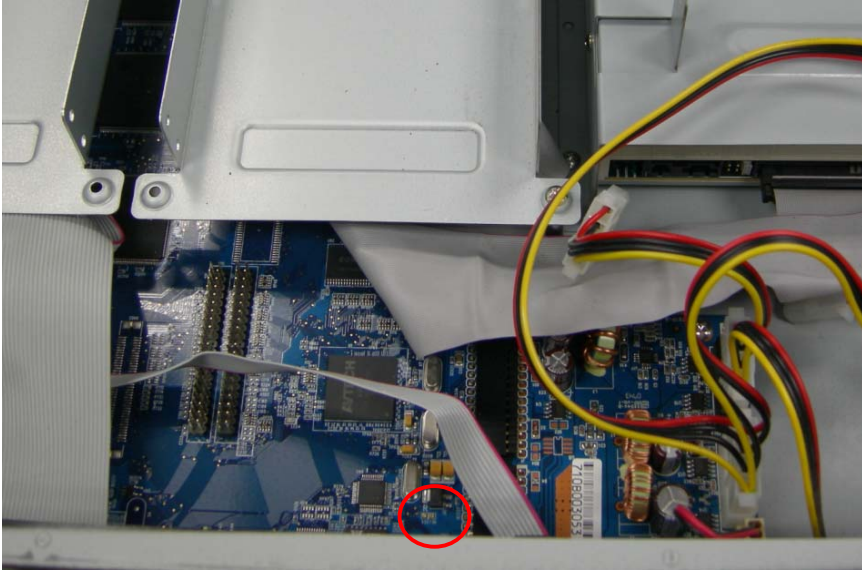
1. Turn off the power and dismount the cover from the unit.



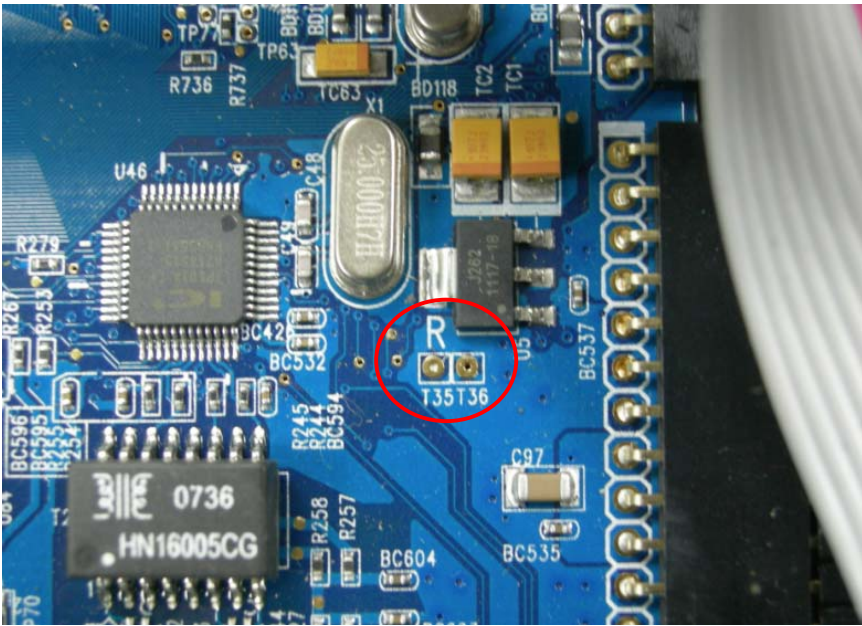
2. Unplug the IDE cable.



3. Find the Reset Position (T35 and T36)



4. Take a closer look at Reset Position.



5. Use the forceps to connect T35 and T36 to form a short circuit. Then plug in the power and hold the short circuit for about 30 seconds until appears the initiation picture and then DVR will be rebooted after 5 seconds.

