

# CMS INSTALLATION AND USAGE GUIDE

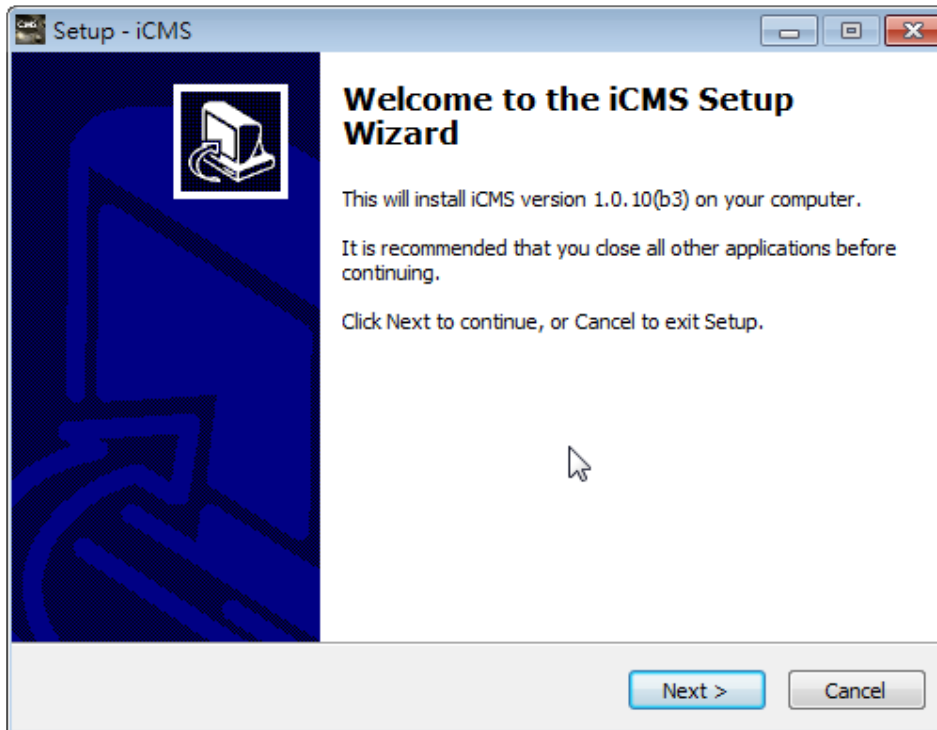
## 1-1 CMS Installation

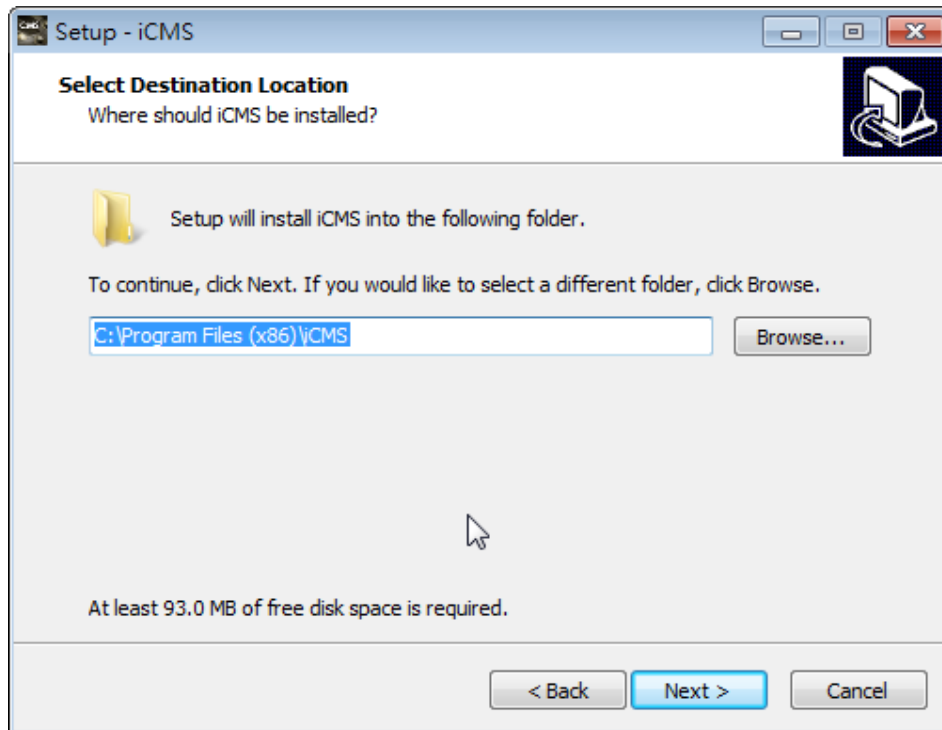
### System Requirement:

- \* CPU: Intel Pentium 4 processor or higher.
- \* OS: Microsoft Windows XP, Windows Vista, Windows 7, or Windows 2003 Server
- \* RAM: 2GB required for the iCMS, besides OS and other required APs.
- \* HDD space: 1GB HDD for program and extra space for recorded video and image.
- \* VGA card support: Direct X9 is mandatory.

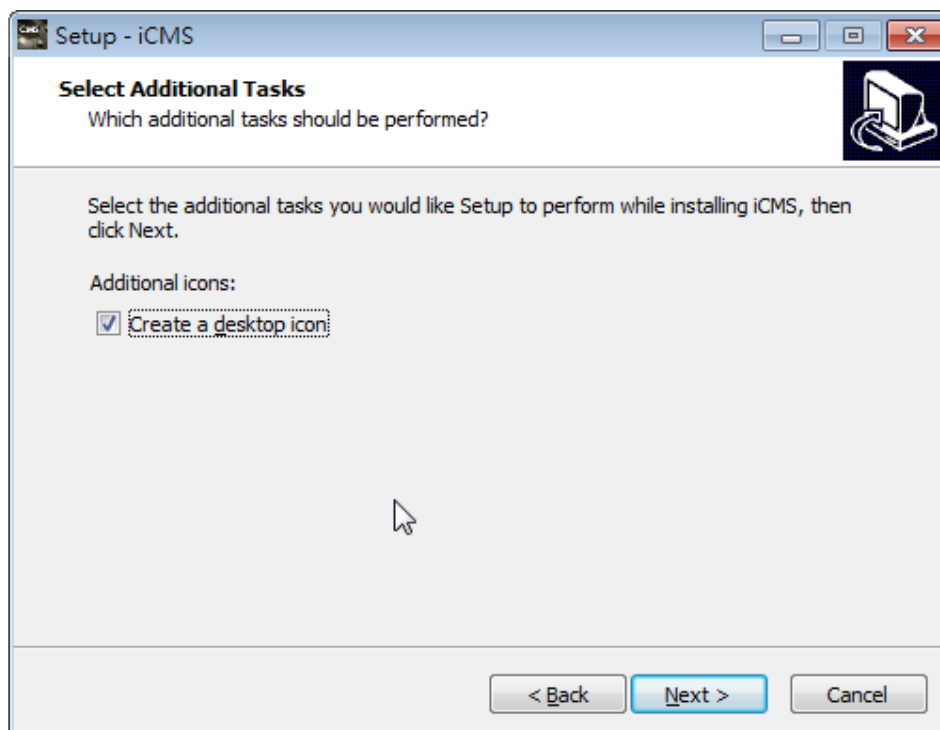
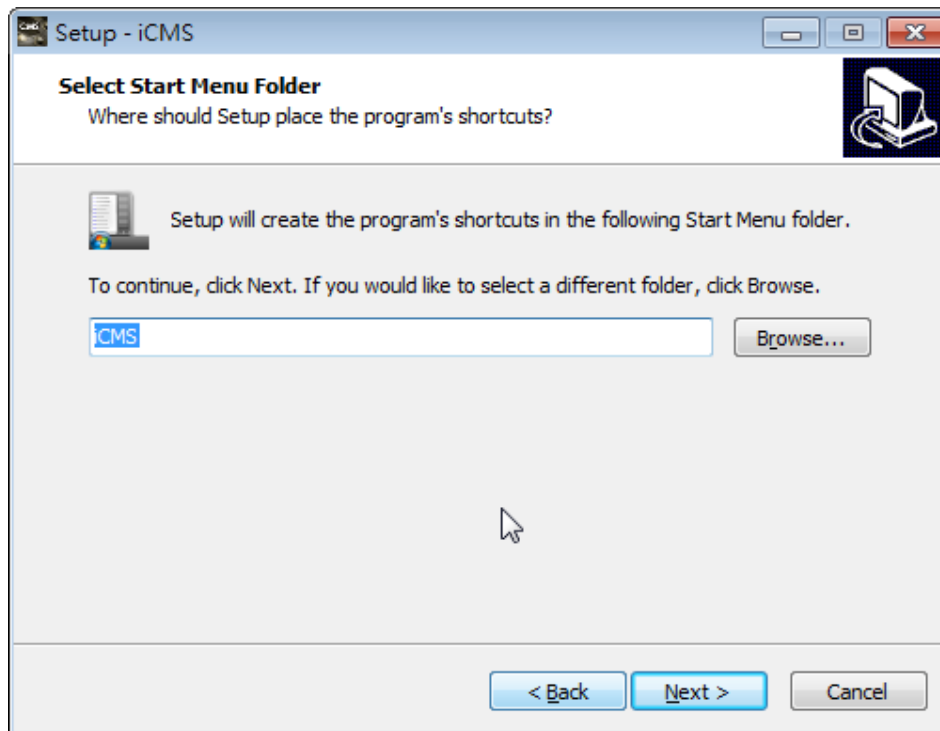
### Installation:

1. Execute "**setup.exe**".
2. Select "**Next**", and then select "**Browse**" to change installation path if needed. Select "**Next**" to the next step.

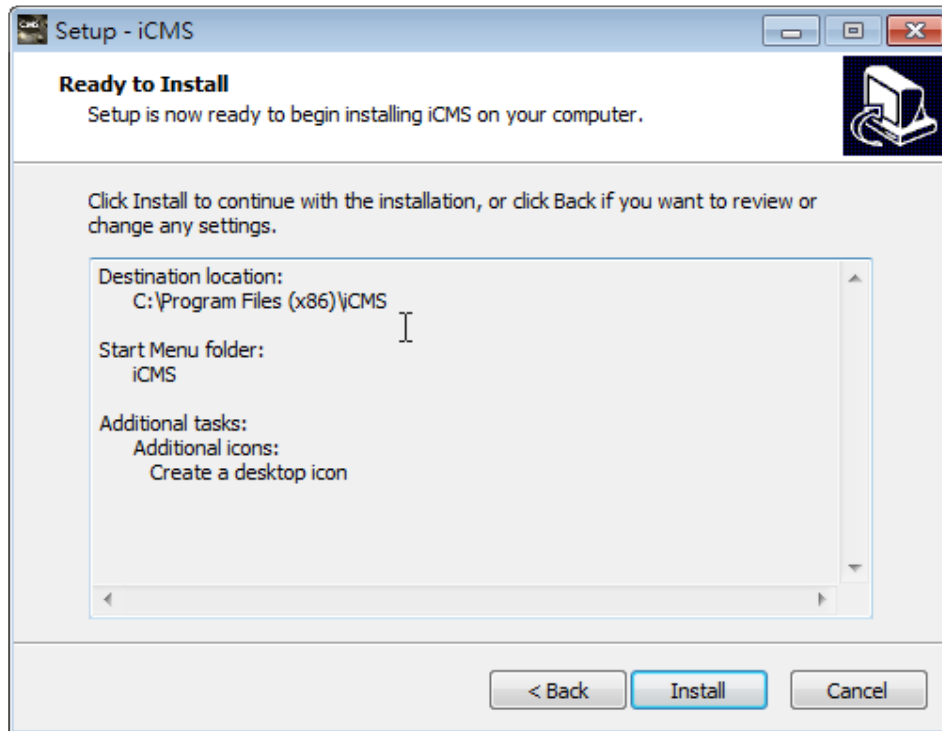




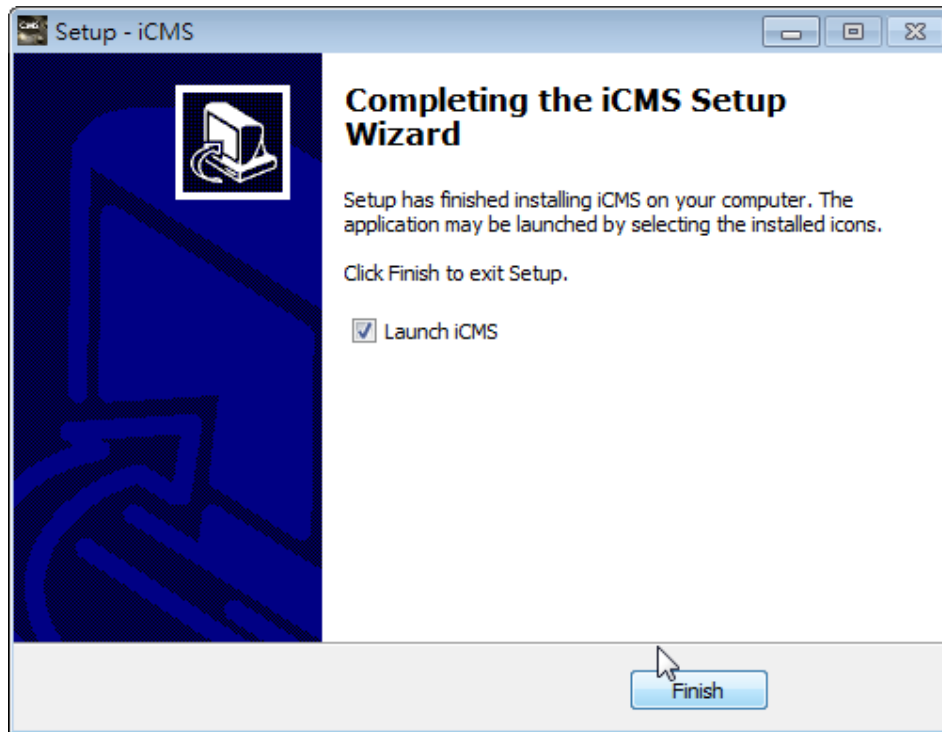
3. Programs can be set to a preferred Start Menu Folder, and choose whether to have a shortcut on the desktop. Confirm and press "Next"



4. Select 'Install' then the installation starts.

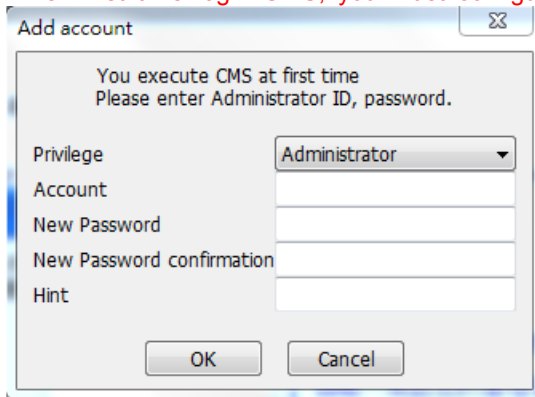


5. Installation is complete! Check the "Launch iCMS" to start the program. Press "Finish" to end the installation process.



## 1-2 Login and environment of CMS

When first time login CMS, you must configure account and password for administrator.



The 'Add account' dialog box is shown. It contains the following fields and controls:

- Privilege: A dropdown menu with 'Administrator' selected.
- Account: A text input field.
- New Password: A text input field.
- New Password confirmation: A text input field.
- Hint: A text input field.
- Buttons: 'OK' and 'Cancel' at the bottom.

The user's permission (please select "system administrator")

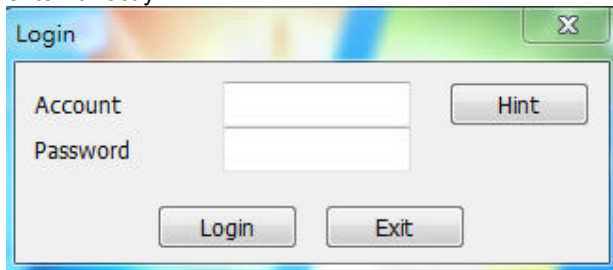
Please enter the administrator account

Please enter the administrator password

Confirm the administrator password

Hint input when forgetting your password

If the the username and password of administrator has been established, you can enter directly.

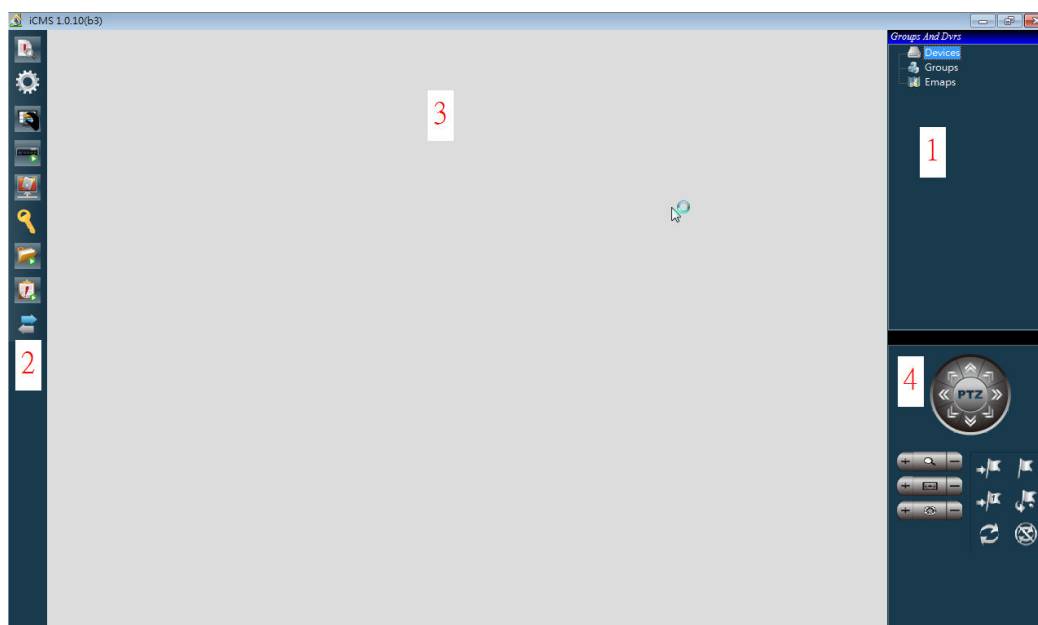


The 'Login' dialog box is shown. It contains the following fields and controls:

- Account: A text input field.
- Password: A text input field.
- Buttons: 'Login' and 'Exit' at the bottom.
- Hint: A button located to the right of the Password field.

If you forget the password, you can click on the "Hint" button to display the prompt.

After login, the iCMS GUI will show as below and the GUI is composed of 4 main panes.



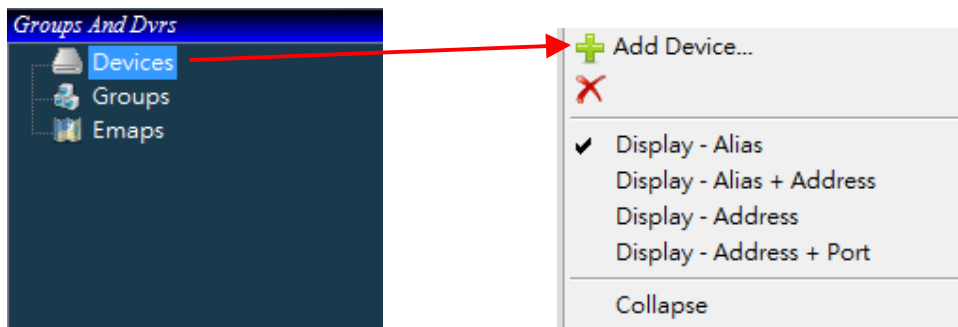
①Devices, Groups, Emaps Pane	It supports “add”, “modify”, and “delete” the current device s, groups, emap in the iCMS. Refer to the chapter "Devices, groups, emaps."
②Toolbar	It contains icons for “event”, “settings”, “snapshot”, “remote playback”, “remote download”, “file playback”, “event playback”, “import”, “export” etc. Refer to the chapter “Tool bar.”
③Live view window	When CMS connects to a DVR, you can view live videos. Refer to the chapter "Live view window."
④PTZ control panel	Control PTZ camera from this panel. Please refer to the chapter "PTZ control."

## 1-3 Devices, Groups, Emaps Configuration

It supports add, modify, and delete the devices, groups, emap in CMS.

### 1-3.1 Devices

1.Add Device: Right-click on device icon and click "Add Device" in the following screen.



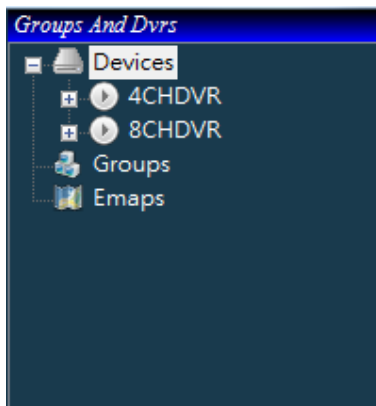
Enter the following informations in sequence. After the input is complete, click "Add" to close this window. Press "Cancel" or the upper right corner of the "X" to close window.

The image shows a dialog box titled "Add Device" with a close button (X) in the top right corner. The dialog contains several input fields: "Address" with the value "192.168.1.150", "Port" with the value "80", "Device Alias" with the value "4CHDVR", "Account" with the value "admin", and "Password" with a masked input (represented by black dots). At the bottom of the dialog are two buttons: "Add" and "Cancel". To the right of the dialog, there are five lines of text in blue, each corresponding to an input field: "Input DVR IP address", "Input DVR HTTP port", "Input DVR Alias", "Input DVR login account", and "Input DVR login password".

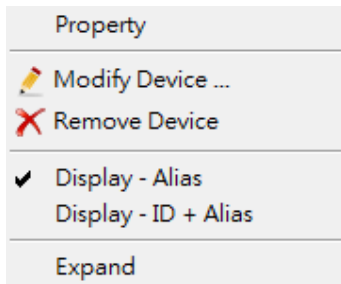
**PS: If more than one DVR device data need to be input, please repeat the above steps.**



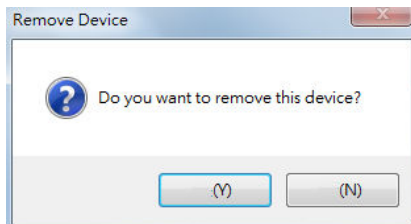
After adding the device, you can see the DVR device name in menu list.



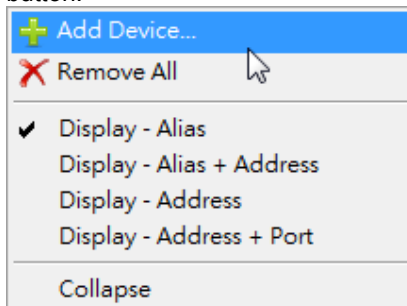
2.Remove device: Right-clicking the device name and click "Remove Device" in the following screen.



Prompt window will appear. Confirm the deletion, press "Yes", to cancel press "No."



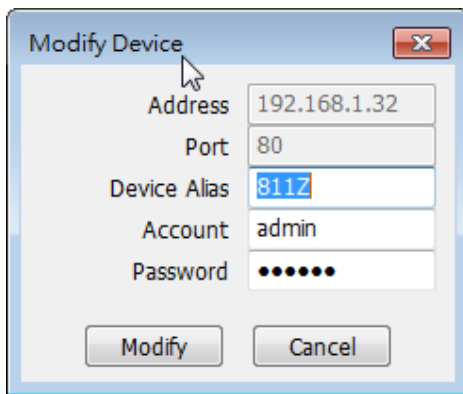
To delete all DVR devices, you can right-click the device icon and click "Remove All" button.



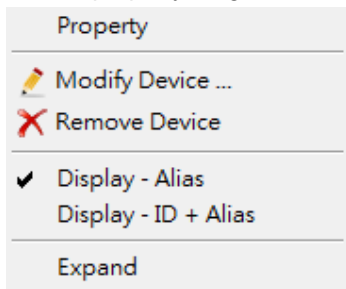
3.Change device name: To modify the device name, you can right-click the device and click "Modify Device ..." as the following screen.



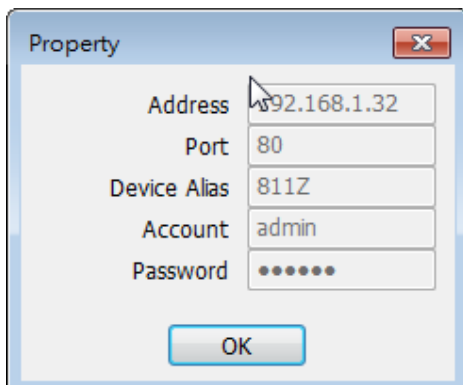
You can modify the device alias, login account, and password here. IP address and port can not be modified.



4.DVR property: Right-click the device name and click "Property" in the following screen.

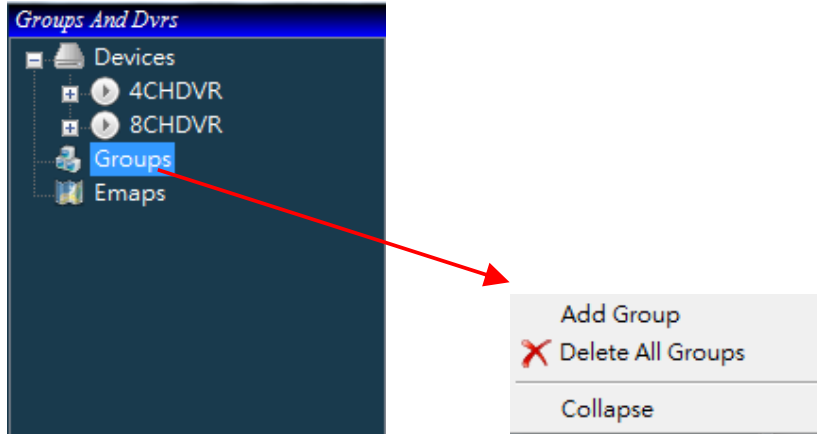


It shows information of this device.

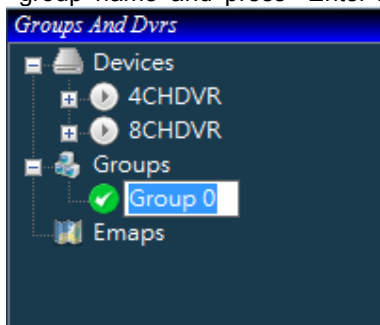


### 1-3.2 Groups

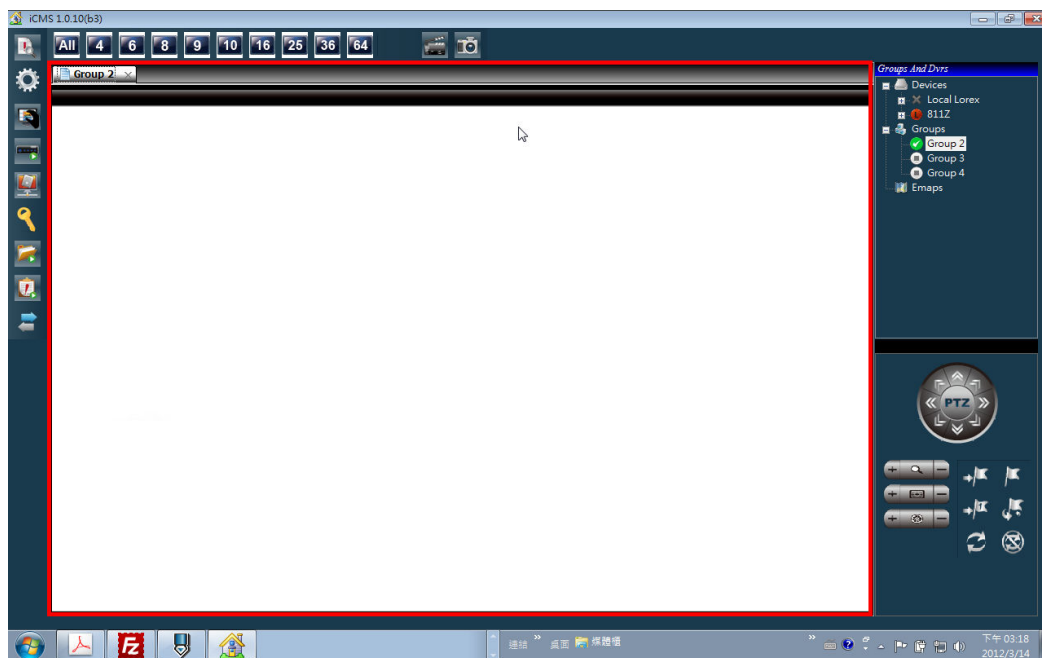
1.Add Groups: Right-click on the group icon and click "Add Group" as the following screen.



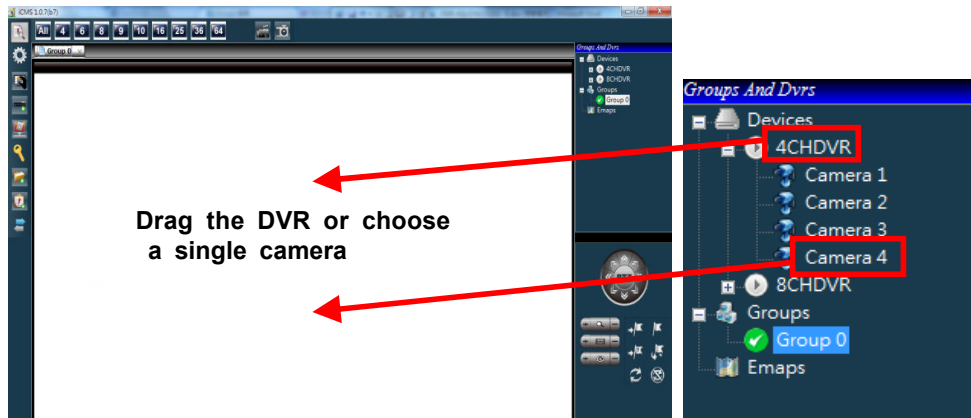
The system will automatically bring up a group name, and modify the name to a preferred group name and press "Enter".



Double click the group name, the system will show a new monitor screen and create a new tab on the screen for this group.



Drag and drop DVR or camera of this group to the monitor screen.

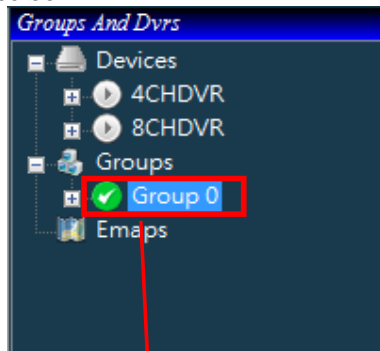


The system displays cameras in the order of camera addition. The order cannot be rearranged but you may delete the camera which you do not want to display.

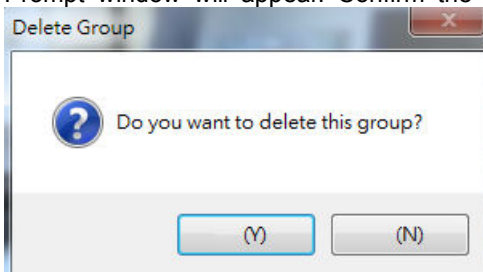


**PS. If more than one group to be input, please repeat the above steps.**

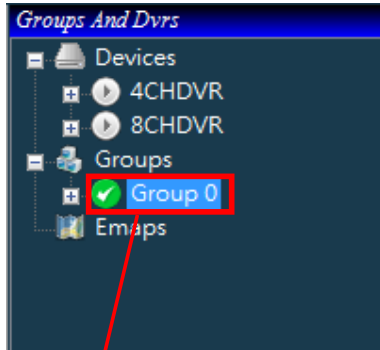
2.Delete Group: Right-click the group name and click "Delete Group" in the following screen.



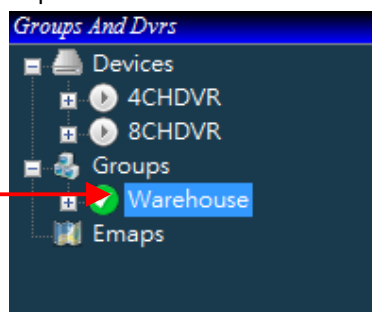
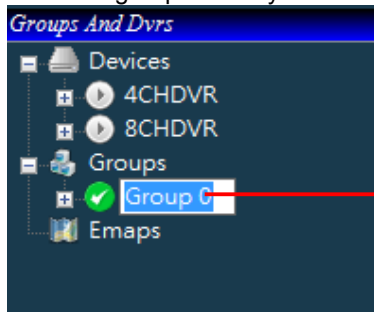
Prompt window will appear. Confirm the deletion, press "Yes", to cancel press "No."



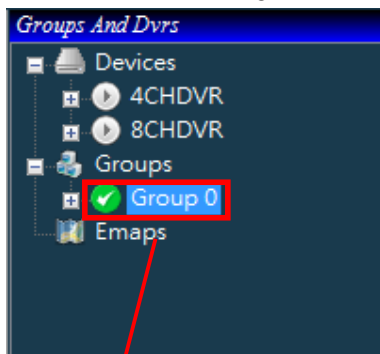
3.Rename Group: Right-click the group name and click "Rename" in the following screen.



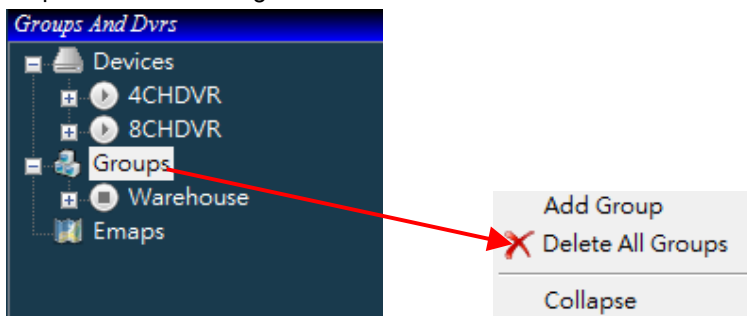
Enter the group name you want, and then press "Enter."



4.Remove all cameras of a group: Right-click the group name and click "Remove All Camera" as the following screen.



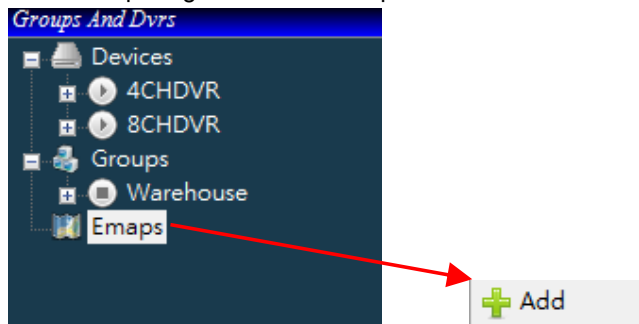
5.Delete all groups: To delete all groups, right-click the "Groups" and click "Delete All Groups" in the following screen.



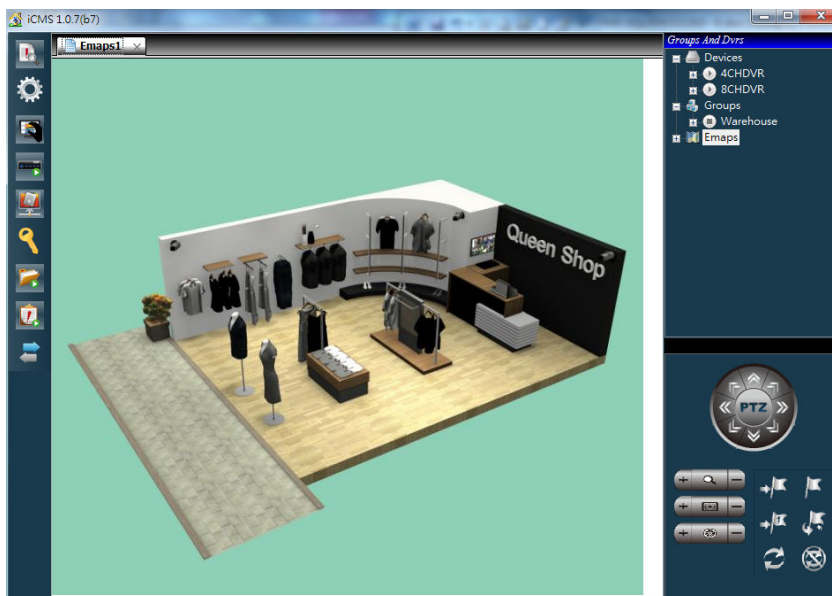
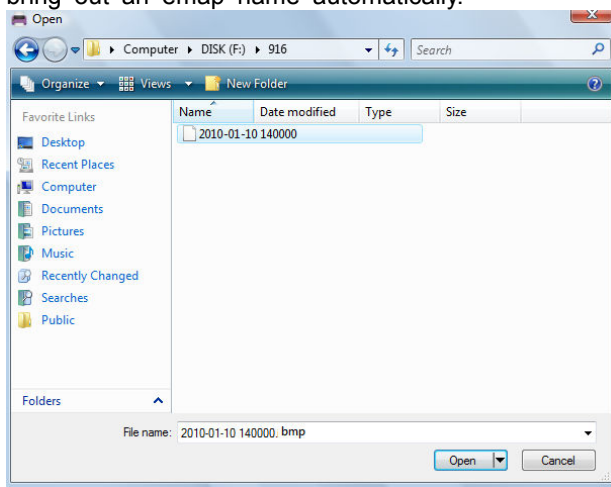


### 1-3.3 Emaps

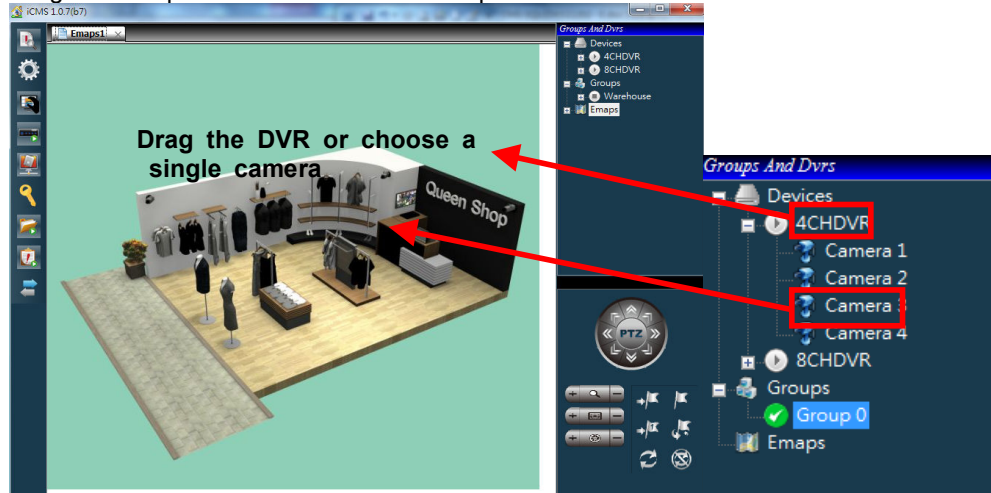
1. Add Emap: Right-click the "Empas" and click "Add" in the following screen.



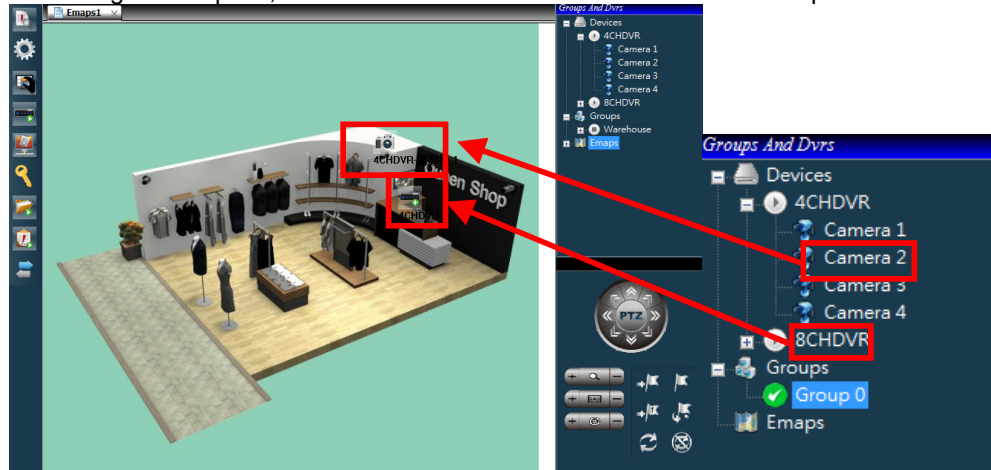
First, you select the image for emap. Confirm by "Open", and then the system will bring out an emap name automatically.



Drag and drop DVR or camera on emap.

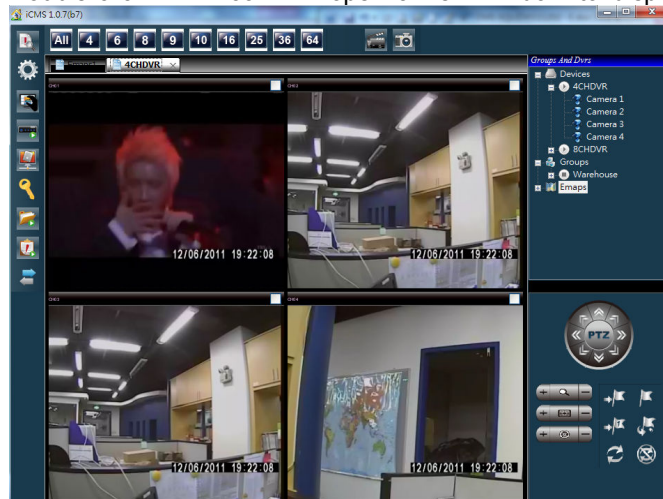


After drag is complete, there are DVR or cameras icon on the emap.



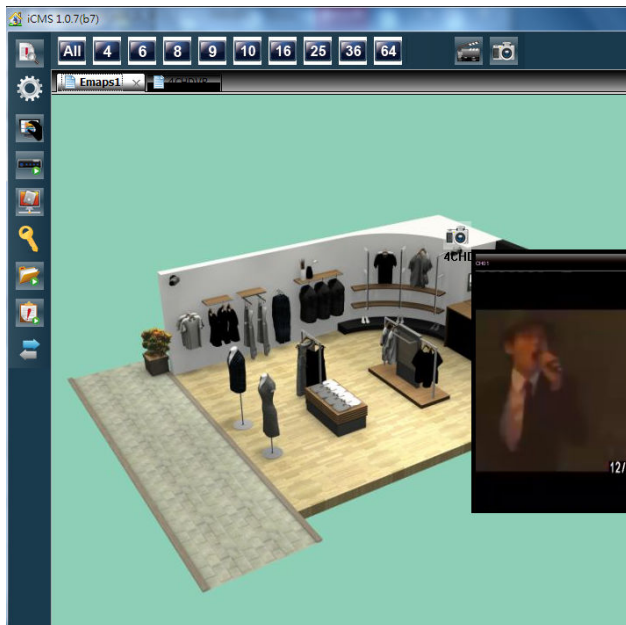
**PS. If more than one emap data to be input, please repeat the above steps.**

Double-click DVR icon will open a new window to display the DVR video.

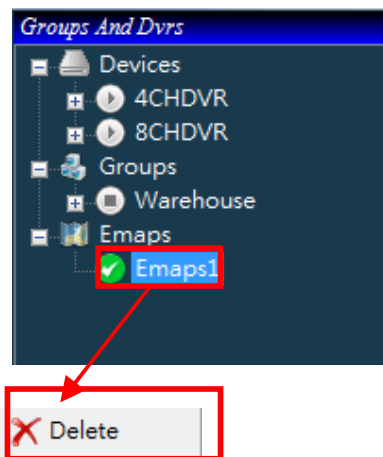




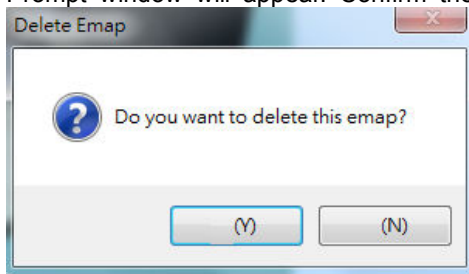
Double-click camera icon will open a new window to display the camera video.









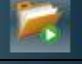
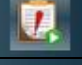

2.Delete emap: Right-click the emap name and click "Delete" in the following screen.




Prompt window will appear. Confirm the deletion, press "Yes", to cancel press "No."

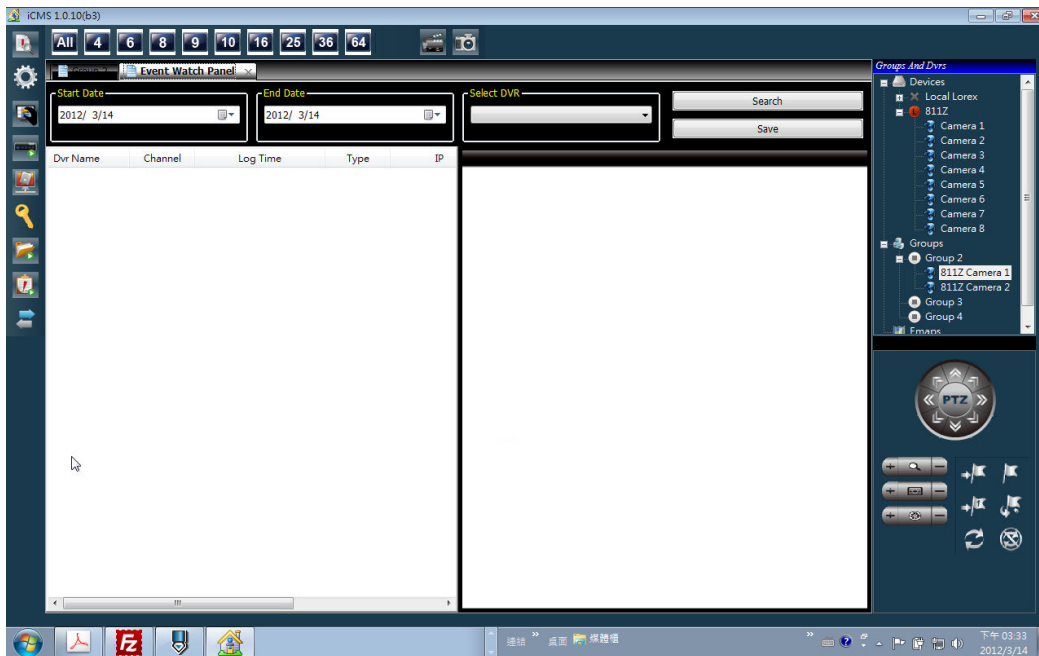


## 1-4 Toolbar

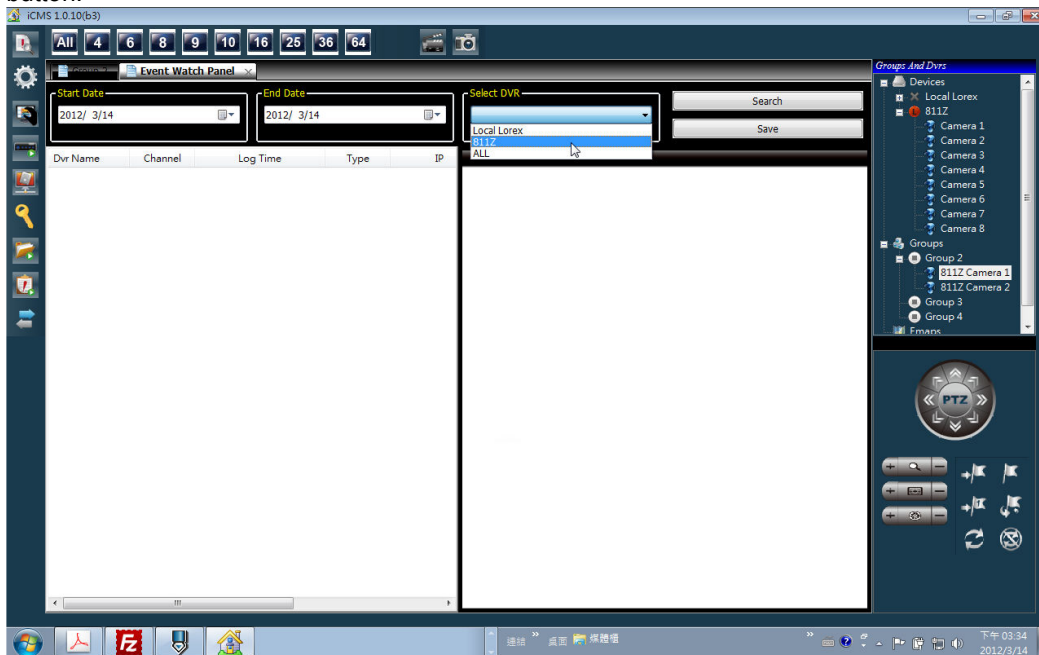
Icon	Information
	Show event watch panel: Search DVR event and export the log file.
	Show Preferences Dialog: Configure CMS settings.
	Snapshot: View the snapshot from DVR or CMS.
	Remote Play: Play the video file on a remote DVR.
	Remote Download Plugin Toolbar: Download video files from a remote DVR.
	Permission: Configure the access previledge of users.
	File Play: Play the DVR video files from local HDD or USB flash drive on the PC which iCMS is running.
	Event Play: Play event video files of a DVR.
	Import/Export Configure file: Import/Export configureation file of CMS.

## 1-4.1 Show event watch panel

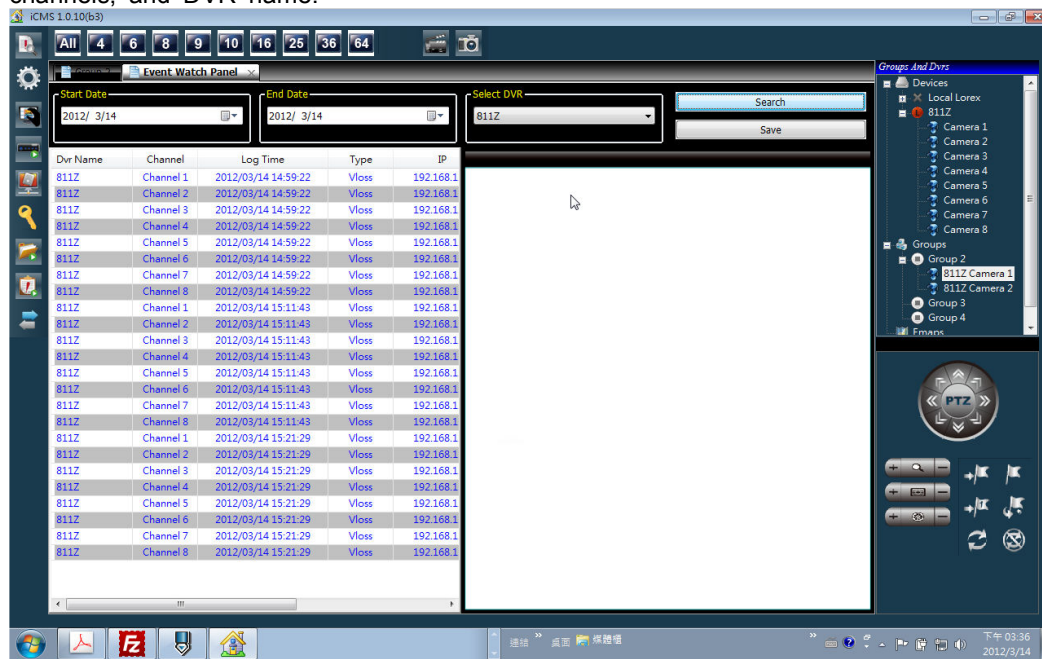
Users can search the DVR event and save as log file.  
Left-click  , it shows the event panel.



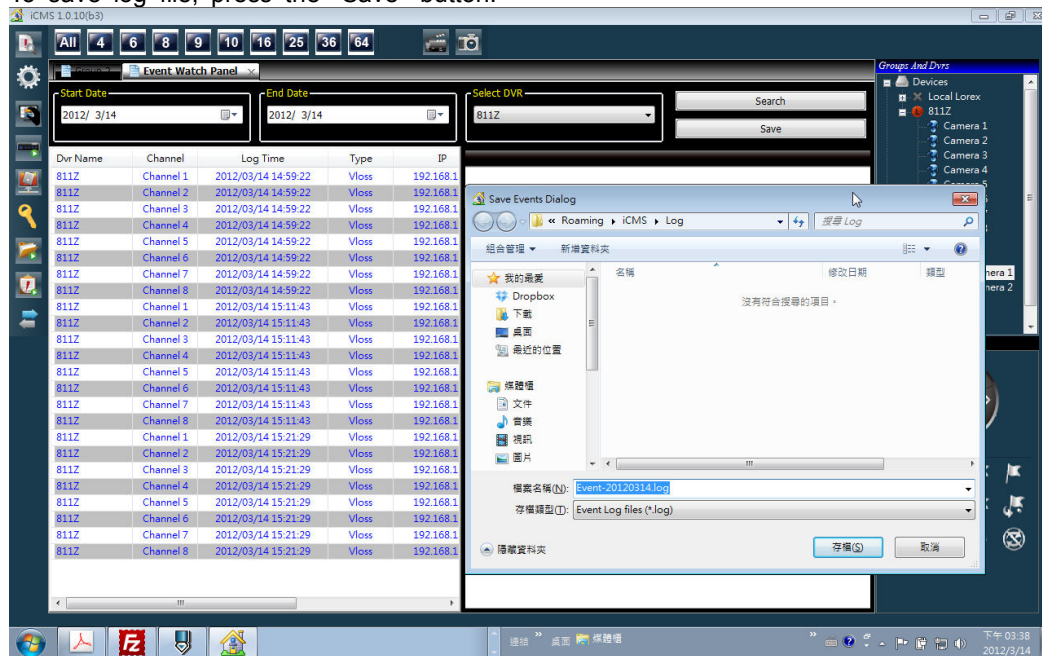
Select the start date, end date, and DVR (one or all), and then press "Search" button.



It shows recorded historical events, including IP address, time of the event, event type, channels, and DVR name.




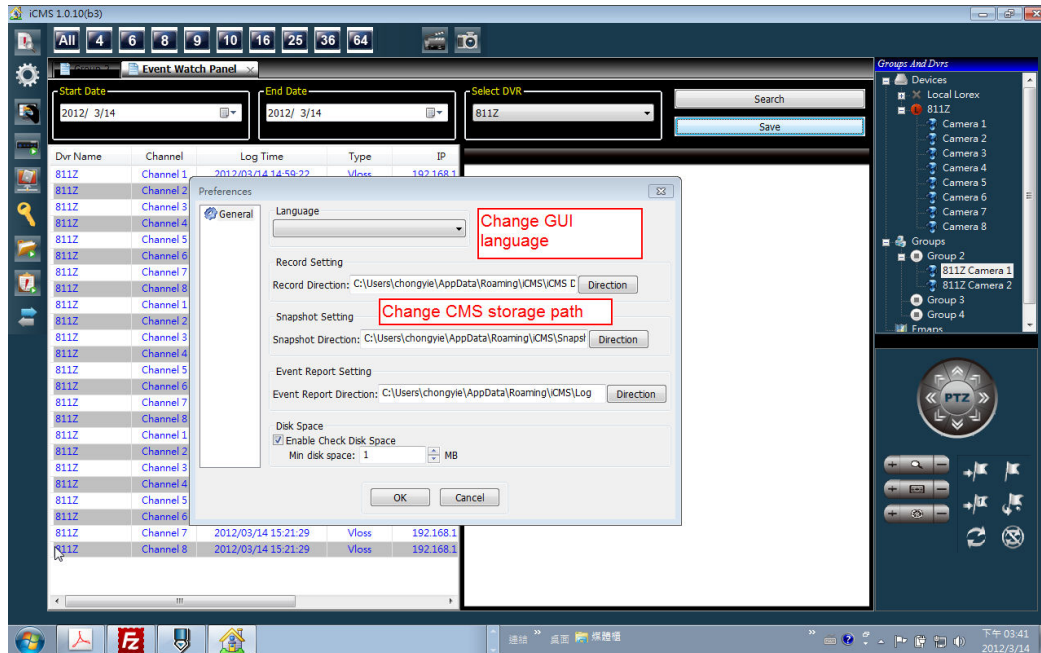
To save log file, press the "Save" button.



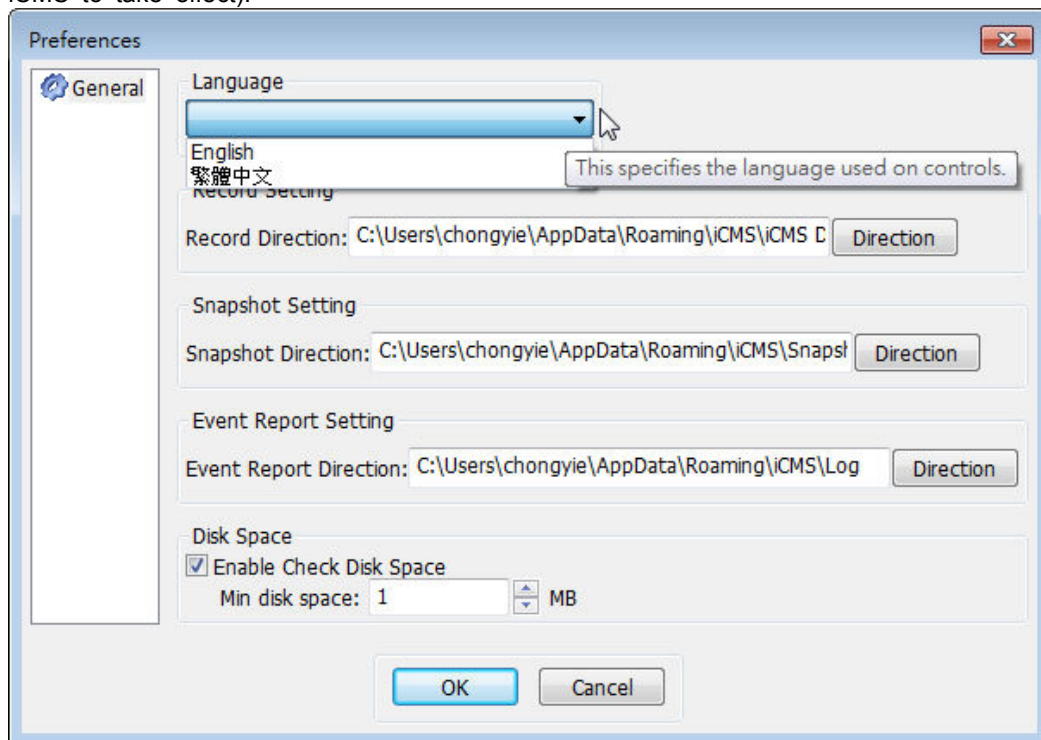


## 1-4.2 Show Preferences Dialog

Click  and the preferences window be be shown.

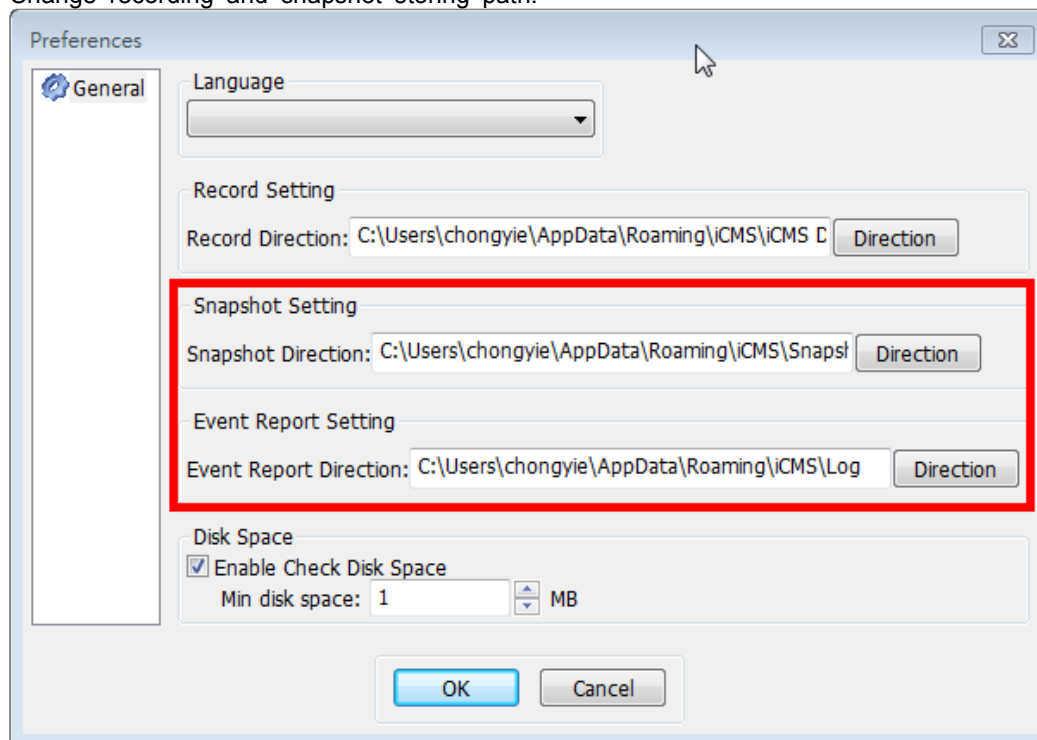


Click on the language drop-down menu to switch the display language (need to restart iCMS to take effect).






Change recording and snapshot storing path.

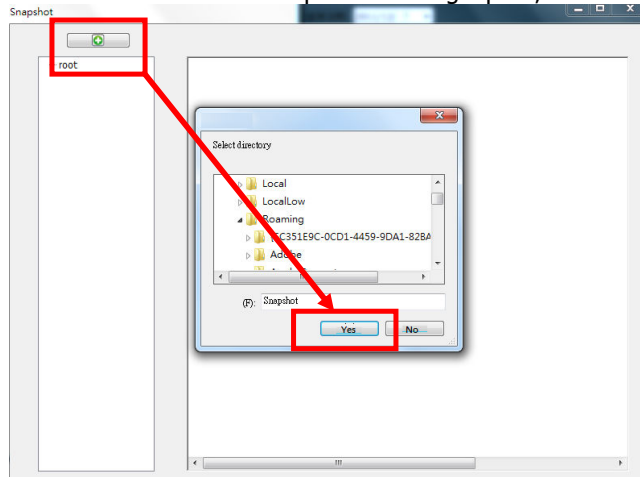


### 1-4.3 Snapshot

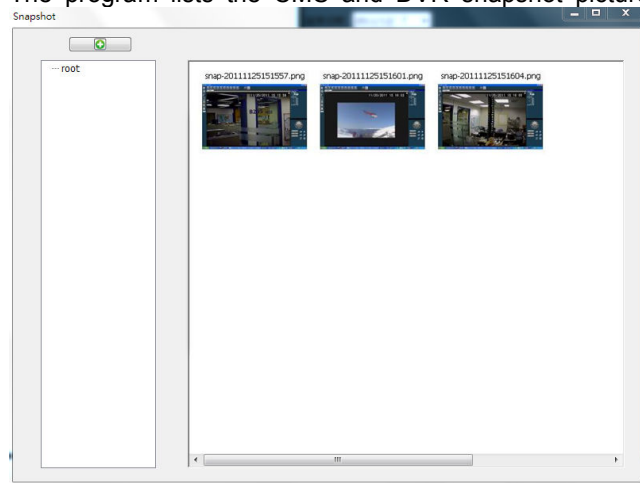
To watch DVR or CMS captured image files.

Left-click  , it shows snapshot panel.

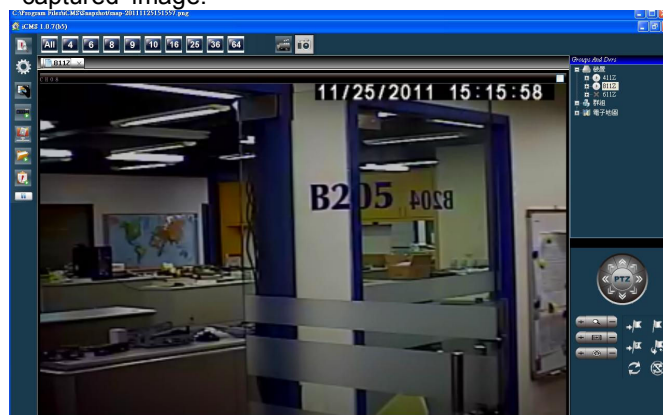
Click the "+" button to open the image path, and then press "Yes."



The program lists the CMS and DVR snapshot picture files automatically.



Click the left mouse button twice on the picture you want to view, and you can see the captured image.

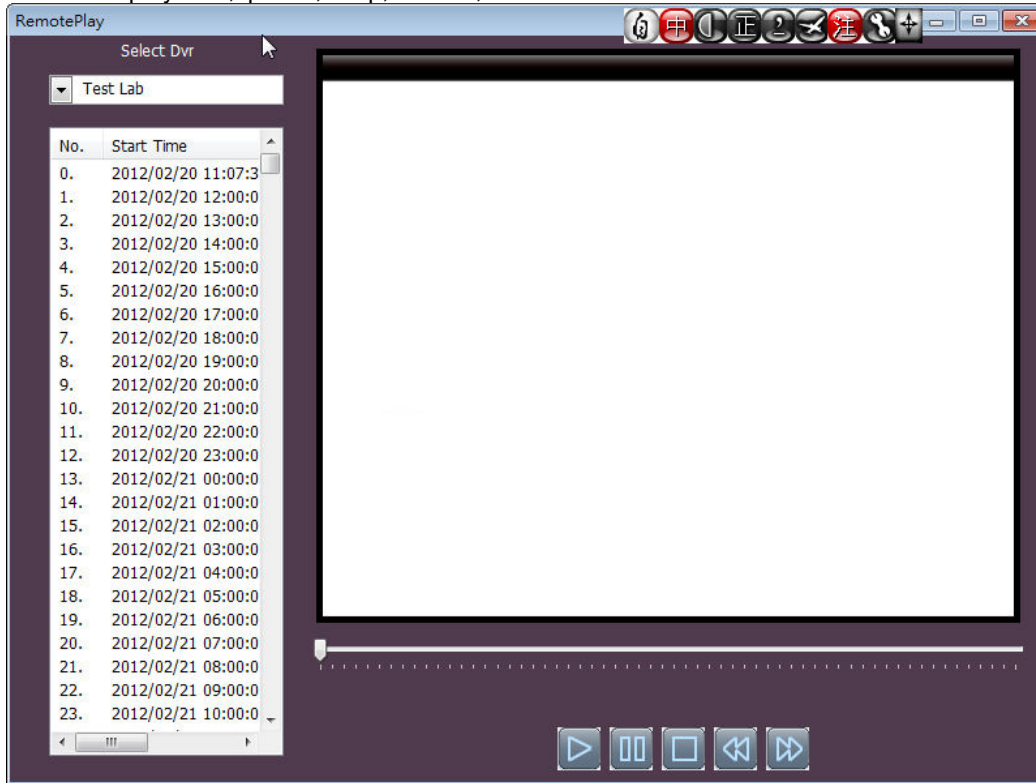


### 1-4.4 Remote Play

Users can play the recorded videos from DVR.

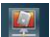
Left-click  , it shows remote playback panel.

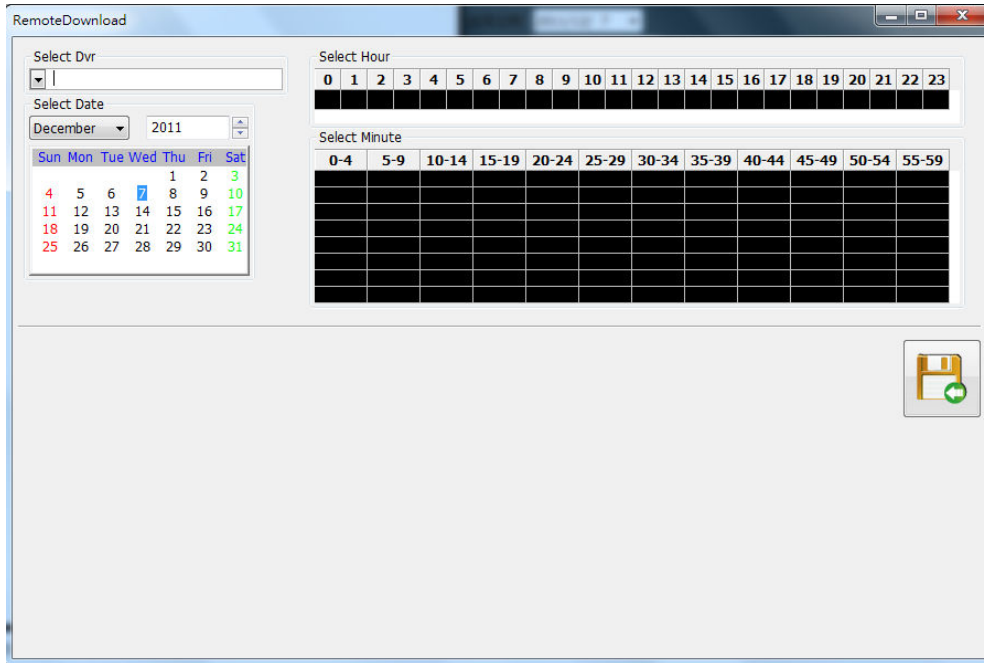
Select the DVR you want to play, and the system will list available video clips. Double-click a clip will play the selected video clip. You can also use the button at the bottom to playback, pause, stop, rewind, and fast forward.



### 1-4.5 Remote Download Plugin Toolbar

It is for downloading the recorded video files of DVR to the PC.


Click  , the remote download panel will pop up.

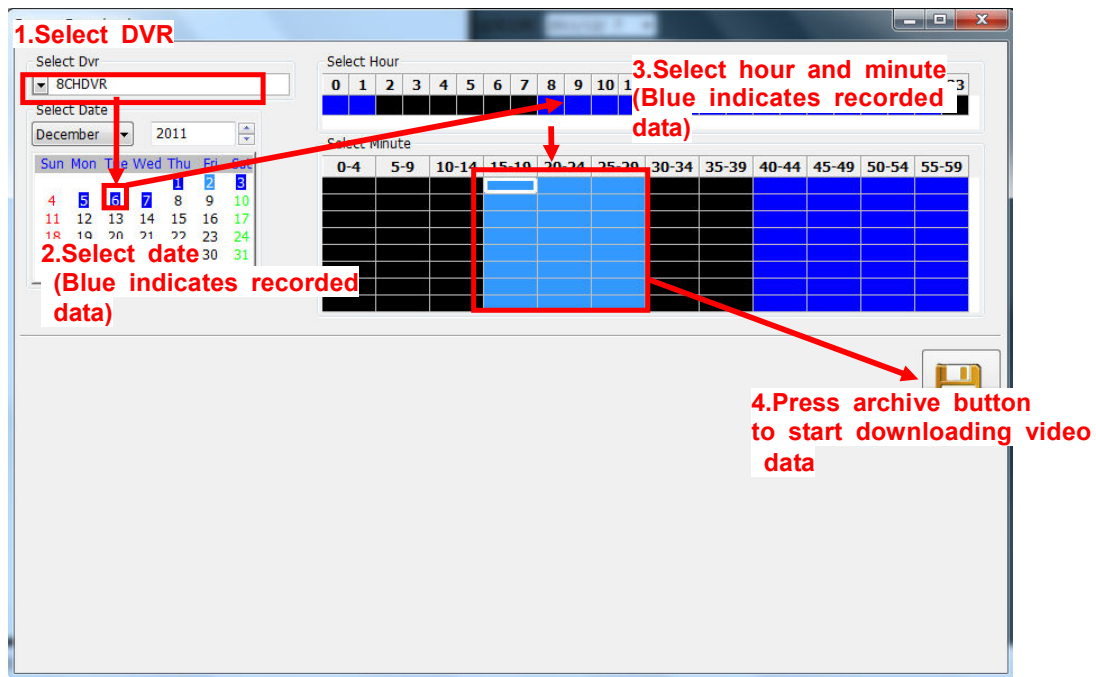


The RemoteDownload dialog box contains the following sections:

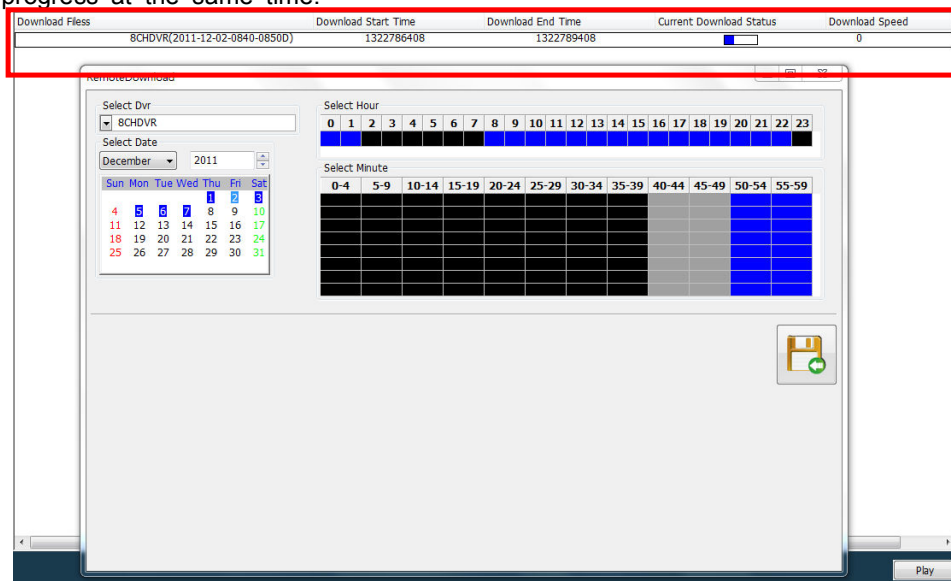
- Select Dvr:** A dropdown menu.
- Select Date:** A calendar for December 2011. The date 14 is highlighted in blue.
- Select Hour:** A row of buttons for hours 0 through 23. The button for hour 14 is highlighted in blue.
- Select Minute:** A grid of buttons for minute ranges: 0-4, 5-9, 10-14, 15-19, 20-24, 25-29, 30-34, 35-39, 40-44, 45-49, 50-54, and 55-59. The button for 10-14 is highlighted in blue.
- Download Button:** A button with a floppy disk icon and a green arrow, located in the bottom right corner.

Choose the DVR to download, the DVR will list the date information of available recorded video in the Date, hour and minute (appear blue) automatically.

After selecting the predreed range and pressing  , the system will begin to download the the video clips of the slected time to the PC.




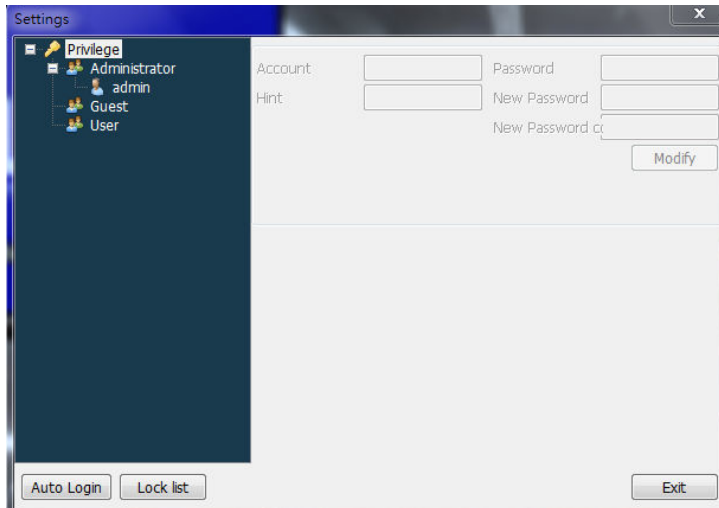
A separate window on top of the screen will pop up to display the current download progress at the same time.



## 1-4.6 Permissions

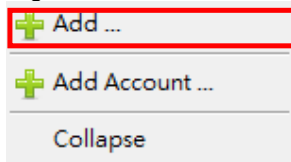
Configure CMS users's permissions.

Left-click  , it shows permission priviledge setting window.

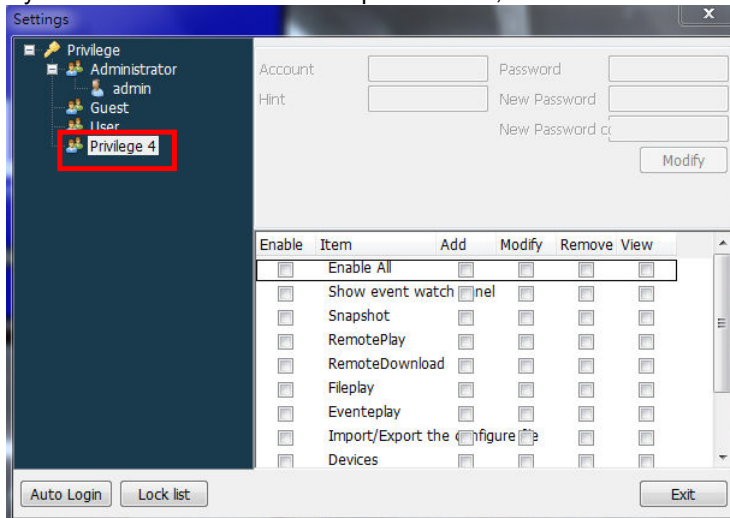


1.Add permissions :

Right-click on the Privilege and click "Add."

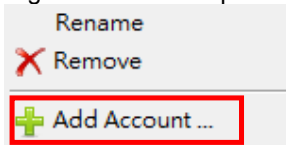


System creates a new set of permissions, and users can modify the name.



## 2. Add account : Add account

Right-click on the permissions and click "Add Account."



"Add account" screen appears, and you can configure user permissions and the username and password.

The 'Add account' dialog box contains the following fields and controls:

- Privilege: A dropdown menu currently showing 'Privilege 4'.
- Account: A text input field.
- New Password: A text input field.
- New Password confirmation: A text input field.
- Hint: A text input field.
- Buttons: 'OK' and 'Cancel' at the bottom.

The user's permission (select "system administrator" or "user")

Please enter the account

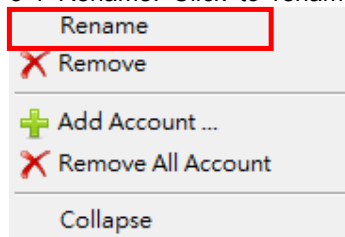
Please enter the password

Confirm the password

Hint input when forgetting your password

## 3. Permissions Management: After adding permissions and accounts, you can right-click on the name of the permission to edit.

### 3-1 Rename: Click to rename the permission's name.



Enter a new name and press Enter.

The 'Settings' dialog box shows a tree view on the left with 'Administrator' selected and highlighted with a red box. The right pane shows the configuration for the selected item.

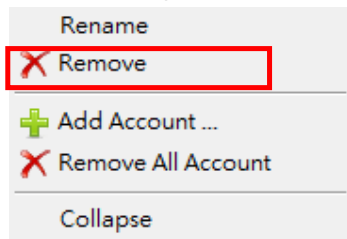
Fields for configuration:

- Account: [Text input]
- Password: [Text input]
- Hint: [Text input]
- New Password: [Text input]
- New Password confirmation: [Text input]
- Modify button

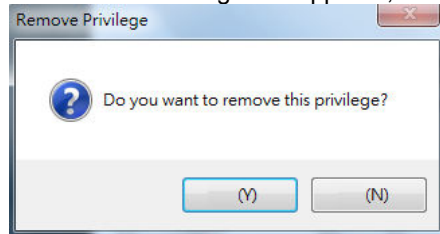
Enable	Item	Add	Modify	Remove	View
<input checked="" type="checkbox"/>	Enable All	<input checked="" type="checkbox"/>	<input checked="" type="checkbox"/>	<input checked="" type="checkbox"/>	<input checked="" type="checkbox"/>
<input checked="" type="checkbox"/>	Show event watch	<input checked="" type="checkbox"/>	<input checked="" type="checkbox"/>	<input checked="" type="checkbox"/>	<input checked="" type="checkbox"/>
<input checked="" type="checkbox"/>	Snapshot	<input checked="" type="checkbox"/>	<input checked="" type="checkbox"/>	<input checked="" type="checkbox"/>	<input checked="" type="checkbox"/>
<input checked="" type="checkbox"/>	RemotePlay	<input checked="" type="checkbox"/>	<input checked="" type="checkbox"/>	<input checked="" type="checkbox"/>	<input checked="" type="checkbox"/>
<input checked="" type="checkbox"/>	RemoteDownload	<input checked="" type="checkbox"/>	<input checked="" type="checkbox"/>	<input checked="" type="checkbox"/>	<input checked="" type="checkbox"/>
<input checked="" type="checkbox"/>	Fileplay	<input checked="" type="checkbox"/>	<input checked="" type="checkbox"/>	<input checked="" type="checkbox"/>	<input checked="" type="checkbox"/>
<input checked="" type="checkbox"/>	Eventplay	<input checked="" type="checkbox"/>	<input checked="" type="checkbox"/>	<input checked="" type="checkbox"/>	<input checked="" type="checkbox"/>
<input checked="" type="checkbox"/>	Import/Export the	<input checked="" type="checkbox"/>	<input checked="" type="checkbox"/>	<input checked="" type="checkbox"/>	<input checked="" type="checkbox"/>
<input checked="" type="checkbox"/>	Devices	<input checked="" type="checkbox"/>	<input checked="" type="checkbox"/>	<input checked="" type="checkbox"/>	<input checked="" type="checkbox"/>

Buttons at the bottom: 'Auto Login', 'Lock list', and 'Exit'.

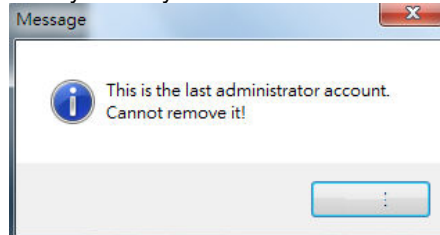
3-2 Remove permissions : Click 'Remove' to remove this permission privilege.



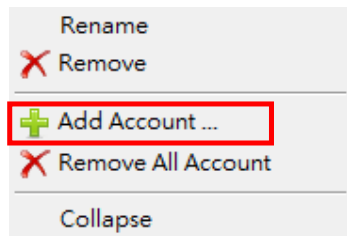
Confirmation dialog box appears, and press Yes to delete, No to cancel.



If only one system administrator account left, then this account can not be deleted.



3-3 Add account : Click to add an account.



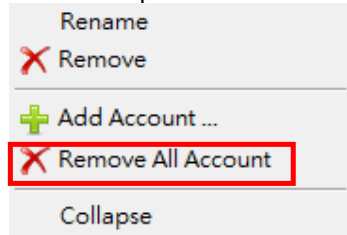
New Account screen appears, and users can set user permissions and the username and password.

A screenshot of the 'Add account' dialog box. It contains several input fields: 'Privilege' (a dropdown menu showing 'Privilege 4'), 'Account' (a text field), 'New Password' (a text field), 'New Password confirmation' (a text field), and 'Hint' (a text field). At the bottom, there are 'OK' and 'Cancel' buttons.

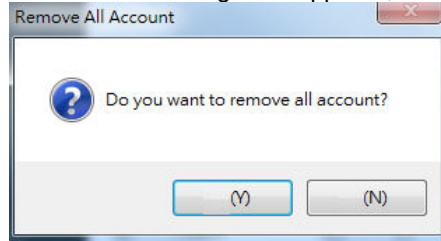
The user's permission  
Please enter the account  
Please enter the password  
Confirm the password  
Hint input when forgetting your password



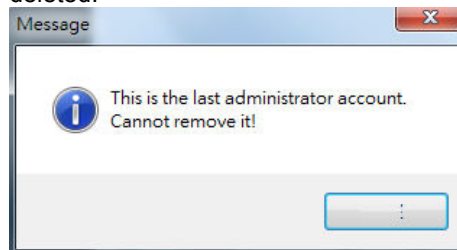
3-4 Remove All Account under the same permission privilege: click to remove all accounts of this permission.



Confirmation dialog box appears, and press Yes to delete, No to cancel.

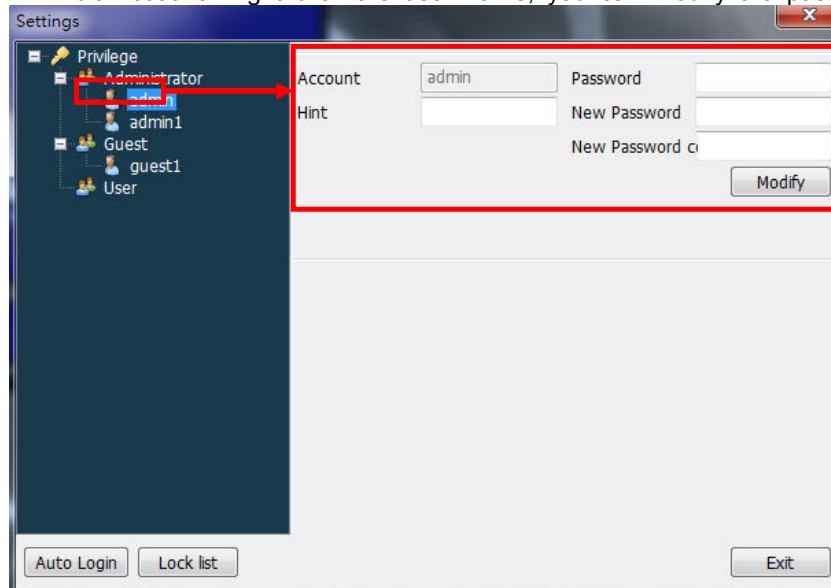


If there is only one administrator account existed in the iCMS, this account can not be deleted.




4 Account management: After adding user account, you can click to change the password or delete.

4-1 Edit Account: Right click the user name, you can modify the password and hint.

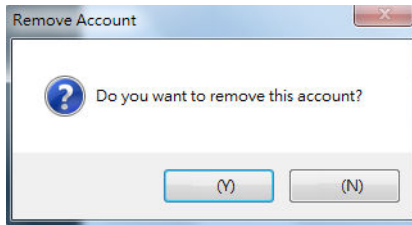


Press the "Modify" button to change.

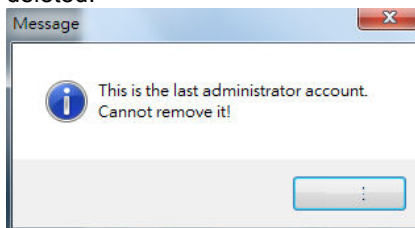
4-2 Remove the account: Right-click the user name to remove this account.

 Remove Account

Confirmation dialog box appears, and press Yes to delete, No to cancel.



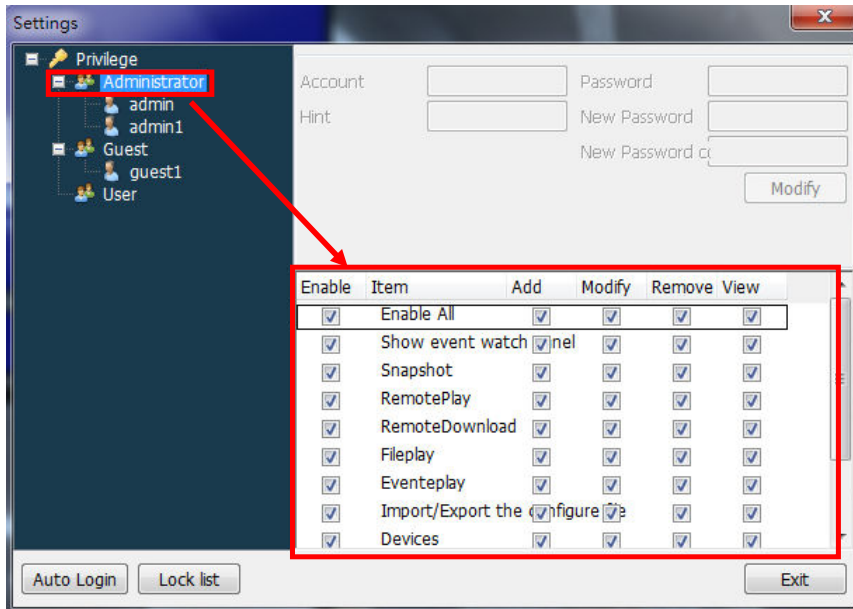
If there is only one administrator account existed in the iCMS, this account can not be deleted.



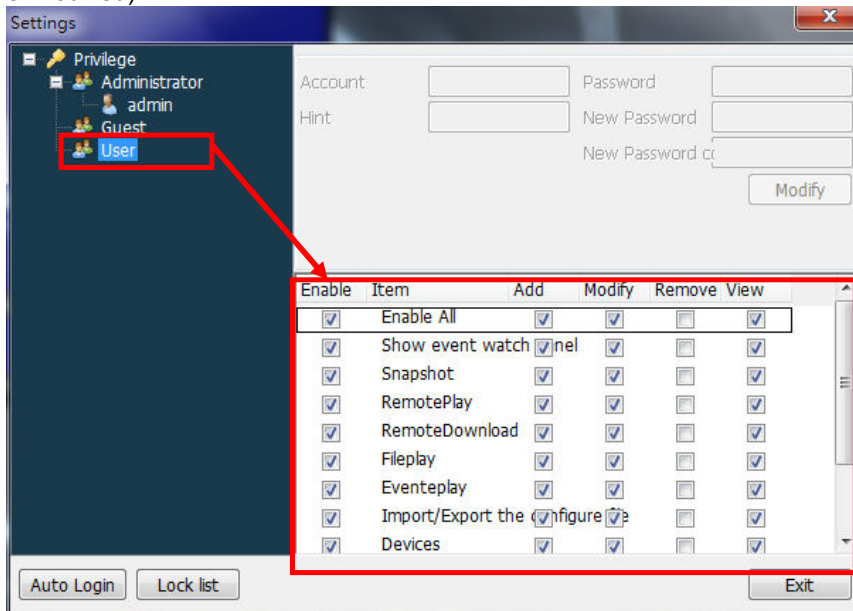
5 Permission to edit: According to different requirements to set different permissions.

#### 5-1 Permission Edit :

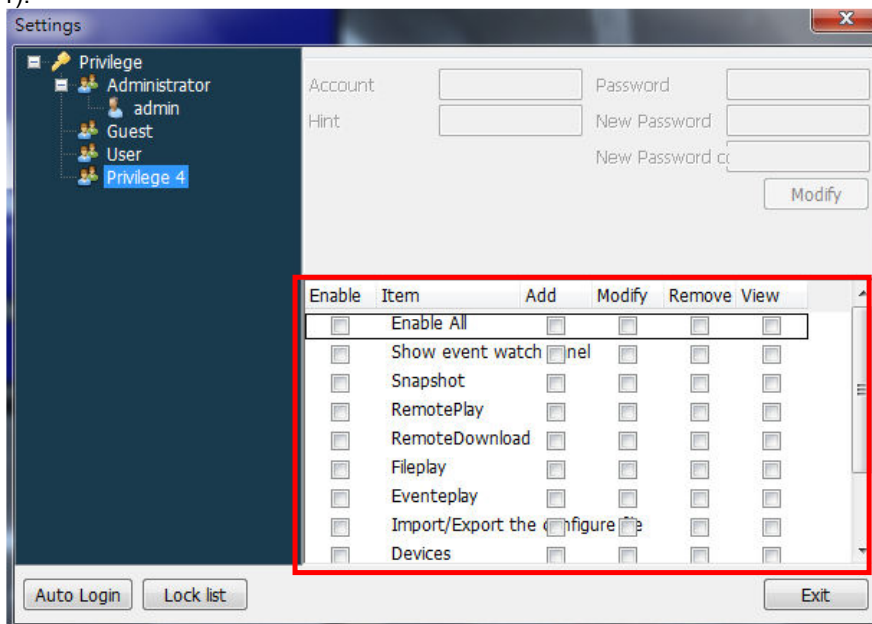
Click "Administrator", you can see the privilege status of the Administrator account (The privilege cannot be modified.)



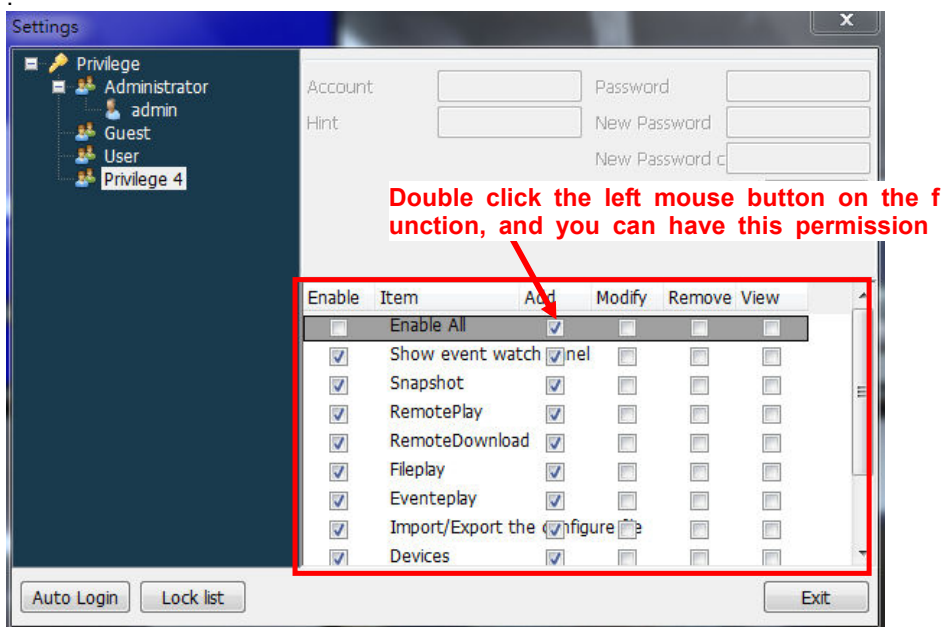
Click the "User", you can see a privilege status of user (The privilege status cannot be modified)



When a new privilege is created, all access privilege are not selected (default behavior).




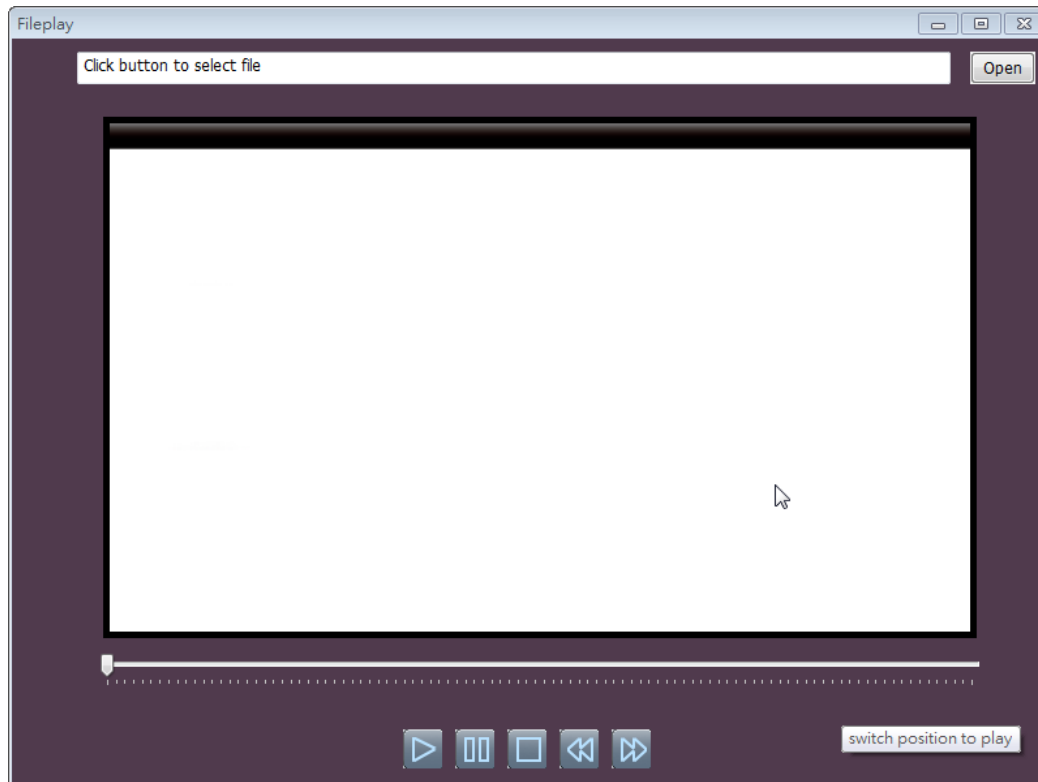
Double-click the checkbox to selected needed privilege. Notice, the iCMS uses double-click to enable or disable a checkbox.



## 1-4.7 File Play

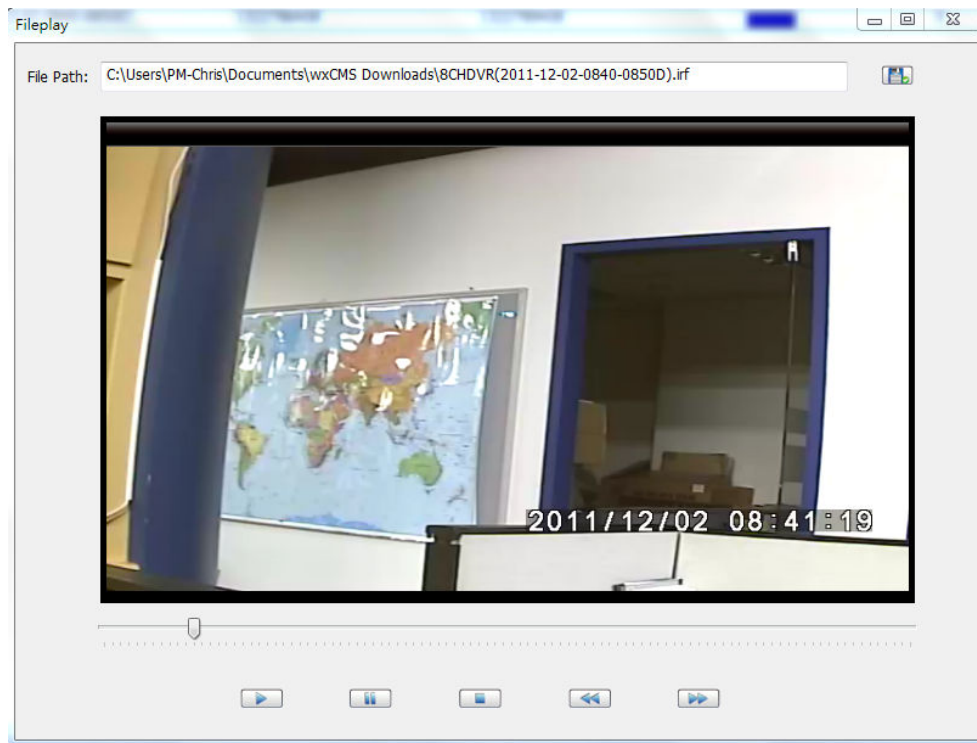
It plays the backuped files in the storage of the iCMS.

Left-click  , it shows remote playback panel.



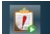
Click on the "Open" to select a backuped file to play.  
You can also use the buttons at the bottom of the window to playback, pause, stop, rewind, and fast forward.

To switch to the single screen, double-click the selected CH to make it full-screen.



### 1-4.8 Event Play

Remotely play the DVR recorded event video.


Left-click  , it shows remote event play panel.

Select the DVR you want to play, and the system will list the event files within the time (date appear blue). Choose a date, and the system will search for the event records of the DVR automatically. Double-click a video clip to playback the selected video. You can also use the function listed at the bottom to playback, pause, stop, rewind, and fast forward.



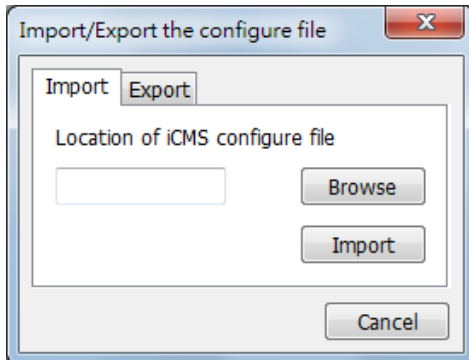
## 1-4.9 Import/Export Configure file

The CMS's configuration can be imported or exported.

Left-click  to enter the configuration file import / export function.

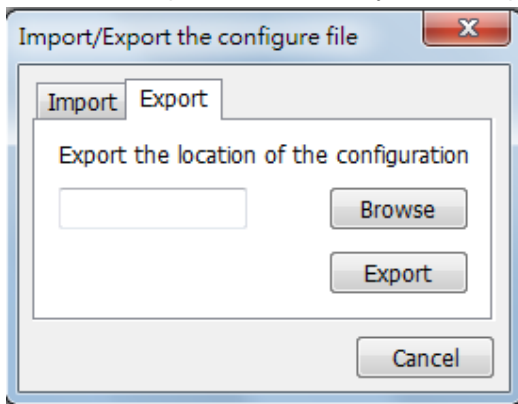
### 1.Import configuration.

Click "Browse" to select the directory where the configuration file is located.  
Press the "Import" button, and you can import the CMS configuration file.



### 2.Export configuration.

Click "Browse" to select the directory where the configuration file is located.  
Press the "Export" button, and you can export the CMS configuration file.



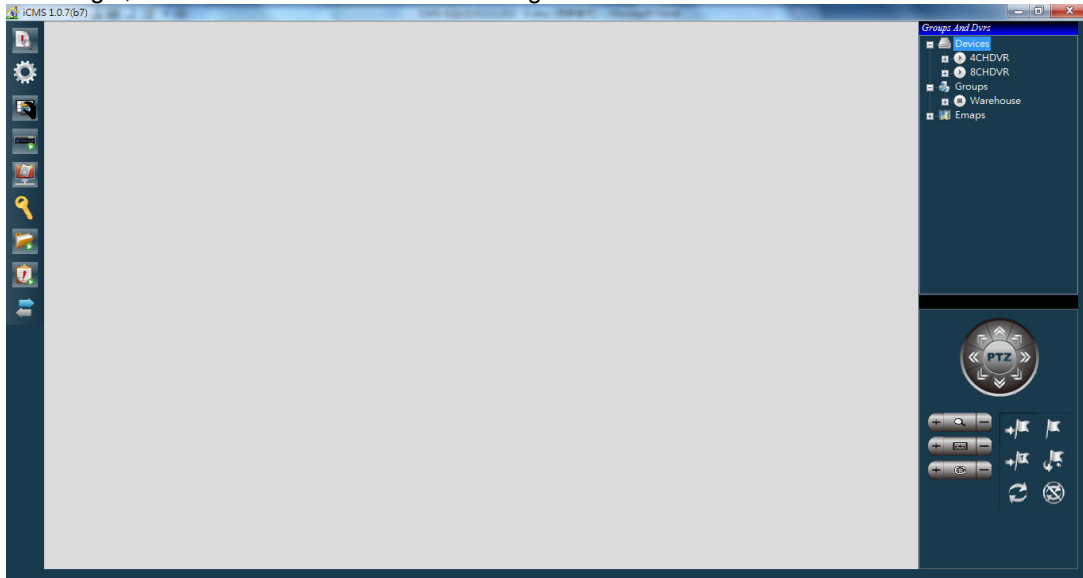


## 1-5 Live View Window

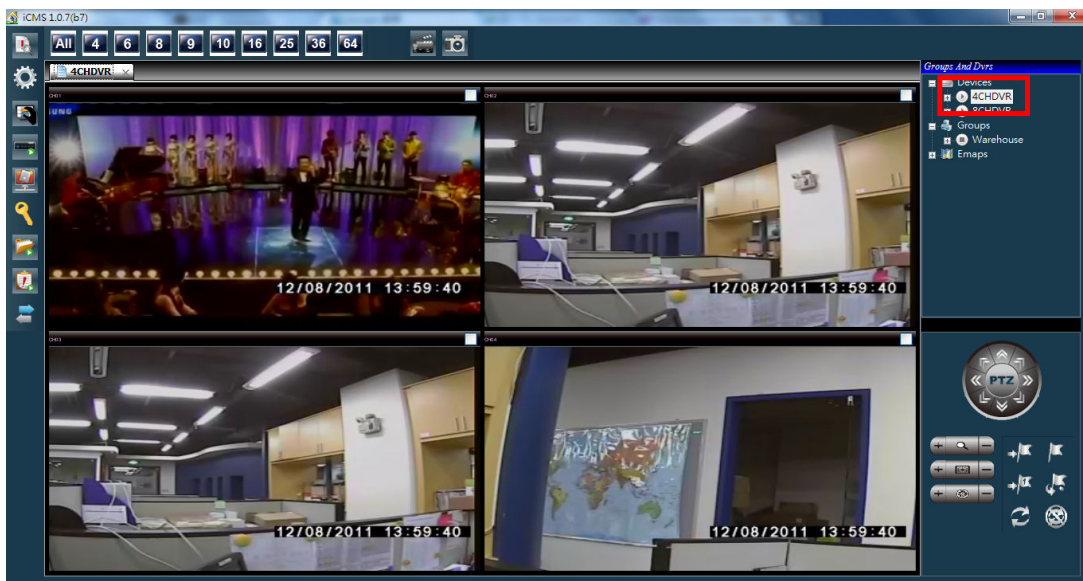
When the DVR and group have established complete, you can use this window to monitor live video. You can also open multiple DVR or group live video input from different DVR..

**(The total number of available channels depends on the performance of the computer running iCMS)**

After login, the screen will show the following status.



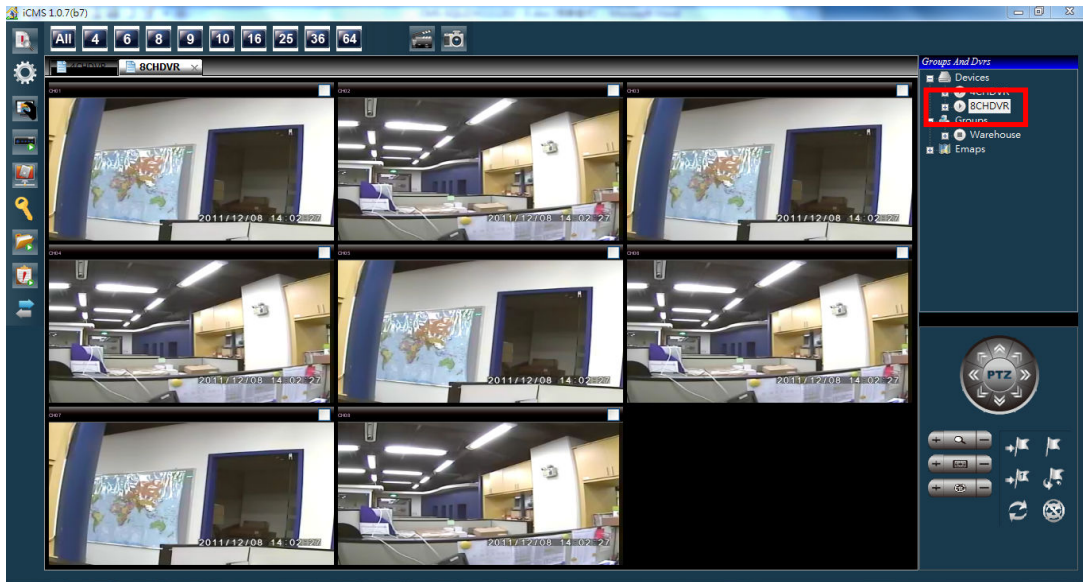
To watch the live view, please double click on a DVR or a group in the Group and Dvr s pane.



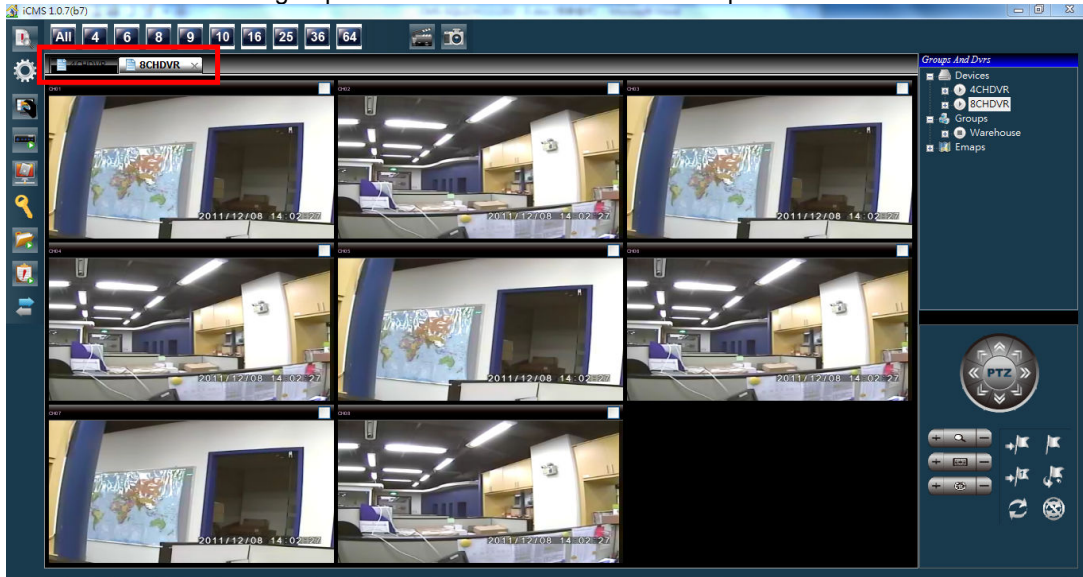


Multiple DVRs or groups are supported.

(The total number of available channels depends on the performance of the computer running iCMS)

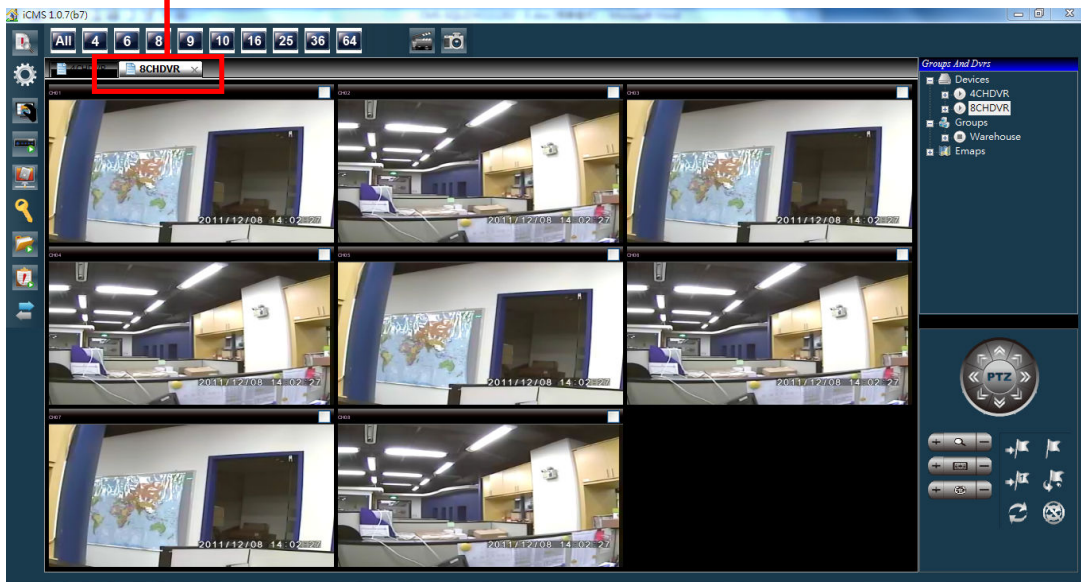


All of the DVR or the group are listed on the tabs on the top of the liveview area.





To turn off liveview of the DVR or group of videos, please click on the "X" at the top right.



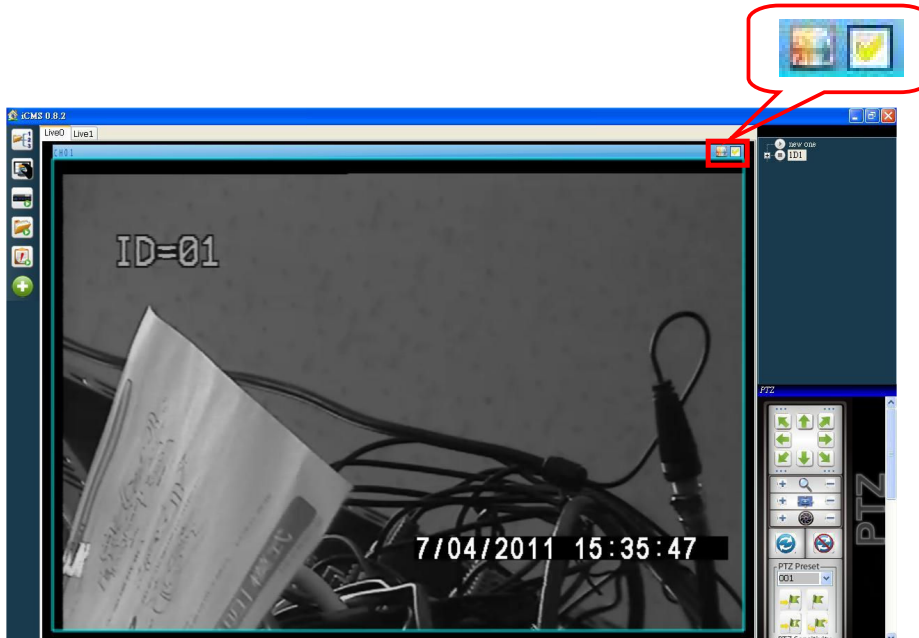
## 1-6 PTZ Control

**PS. some supported special functions depend on PTZ model.**

Step1: Go to live view monitoring (refer to 1-5 chapter).



Step2: Check upper right corner of the screen window of PTZ camera.  
Flashing color symbol indicates that the channel is the PTZ camera.



Step3: You can begin to use the left control key to operate the PTZ camera.

